

| | | |
|--|------------------------|---|
| WAAS CH 99325 W22A | APP CRS 220° | Rwy Idg 5007 TDZE 69 Apt Elev 70 |
|--|------------------------|---|

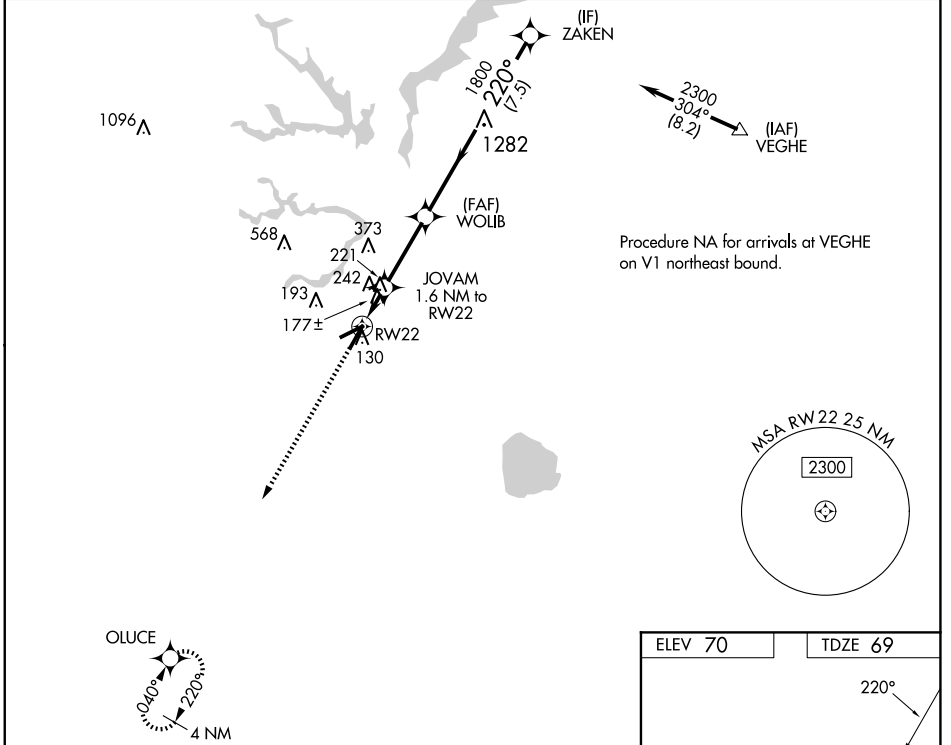
RNAV (GPS) RWY 22

SUFFOLK EXEC (SF'Q)

⚠ DME/DME RNP-0.3 NA. Helicopter visibility reduction below 3/4 SM NA. VDP NA with Norfolk Intl altimeter setting. When local altimeter setting not received, use Norfolk Intl altimeter setting and increase all MDA 60 feet, and increase LP Cats C and D visibility 1/4 mile and LNAV Cats C and D visibility 1/8 mile.

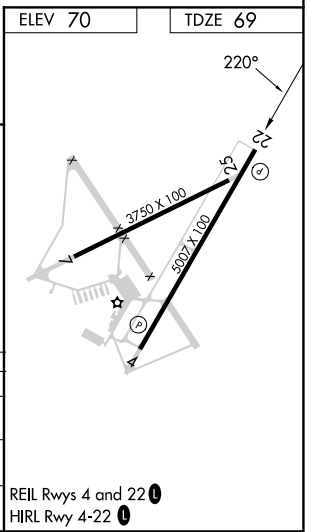
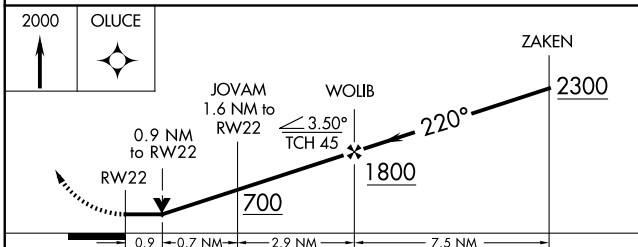
⚠ MISSED APPROACH: Climb to 2000 direct OLUCE and hold.

| | | |
|--------------------------|---|---------------------------------|
| AWOS-3 119.375 | NORFOLK APP CON 127.9 269.425 | UNICOM 122.7 (CTAF) 0 |
|--------------------------|---|---------------------------------|



NE-3, 20 MAR 2025 to 17 APR 2025

NE-3, 20 MAR 2025 to 17 APR 2025



| CATEGORY | A | B | C | D |
|-------------------|----------------------|----------------------|------------------------------|----------------------|
| LP MDA | 440-1 | | 371 (400-1) | |
| LNAV MDA | 500-1 | 431 (500-1) | 500-1 1/4 | 431 (500-1 1/4) |
| C CIRCLING | 500-1 430 (500-1) | 560-1 490 (500-1) | 680-1 3/4 610 (700-1 3/4) | 680-2 610 (700-2) |