

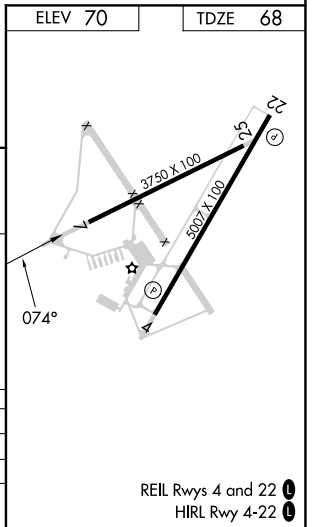
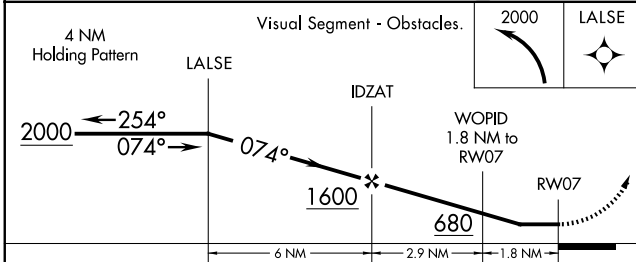
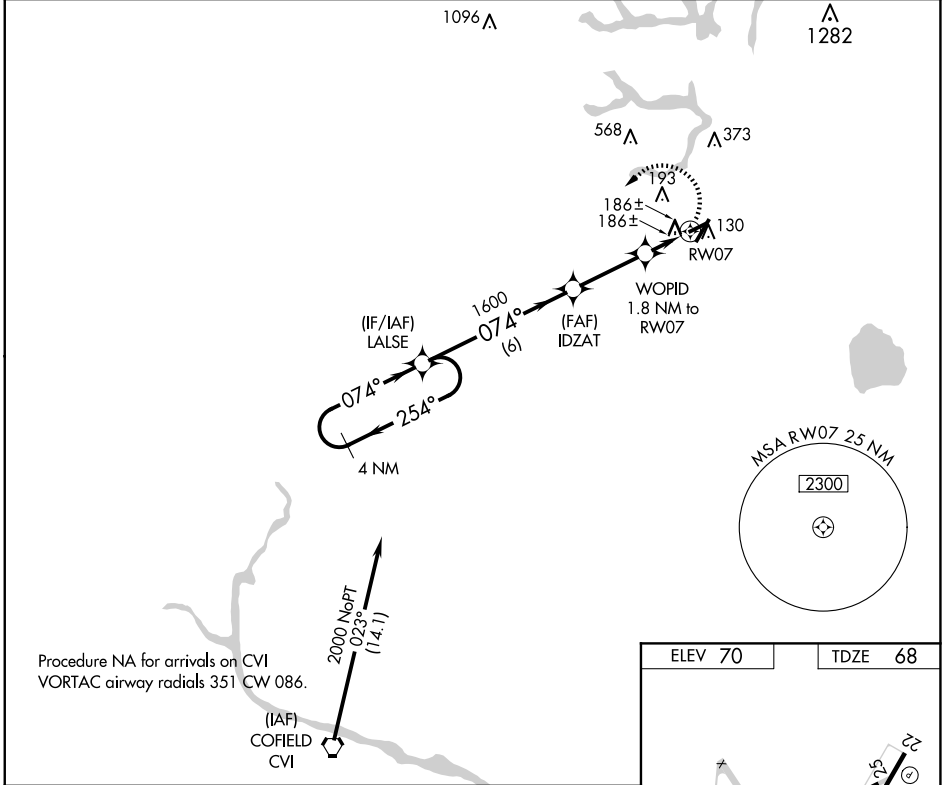
WAAS CH <b>78424</b> <b>W07A</b>	APP CRS <b>074°</b>	Rwy Idg <b>3750</b> TDZE <b>68</b> Apt Elev <b>70</b>
--	------------------------	---

# RNAV (GPS) RWY 7

SUFFOLK EXEC (SF<sup>T</sup>Q)

<p><b>⚠</b> DME/DME RNP-0.3 NA. Helicopter visibility reduction below 3/4 SM NA. When local altimeter setting not received, use Norfolk Intl altimeter setting and increase all MDA 60 feet.</p>	<p><b>MISSED APPROACH:</b> Climbing left turn to 2000 direct LALSE and hold.</p>
--	--

AWOS-3 <b>119.375</b>	NORFOLK APP CON <b>127.9 269.425</b>	UNICOM <b>122.7 (CTAF)</b> <b>📶</b>
--------------------------	---	--



CATEGORY	A	B	C	D
LP MDA	480-1	412 (500-1)		NA
LNAY MDA	500-1	432 (500-1)		NA
<b>C</b> CIRCLING	500-1 430 (500-1)	560-1 490 (500-1)		NA

NE-3, 20 MAR 2025 to 17 APR 2025

NE-3, 20 MAR 2025 to 17 APR 2025