

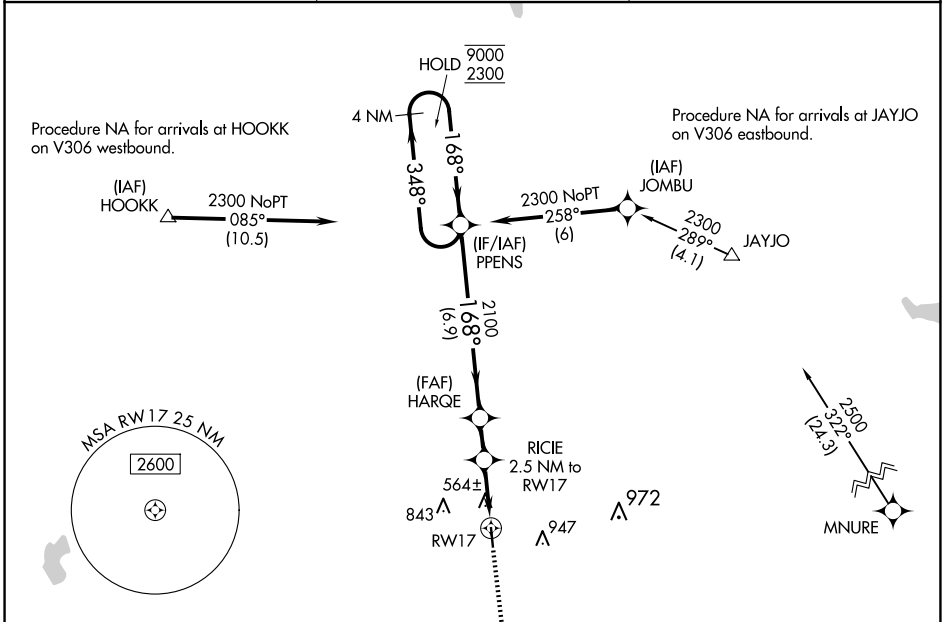
APP CRS 168°	Rwy Idg 4000
	TDZE 484
	Apt Elev 484

RNAV (GPS) RWY 17

GIDDINGS-LEE COUNTY (GYB)

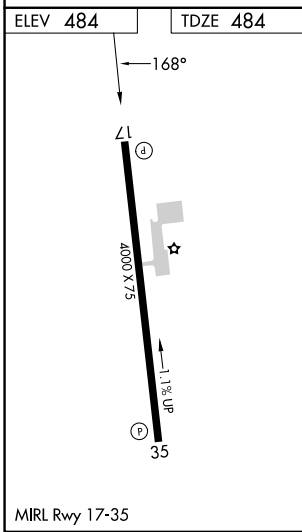
RNP APCH - GPS.	<p>▼ Procedure NA at night. Rwy 17 helicopter visibility reduction below 1 SM NA. When local altimeter not received, use AUS altimeter setting and increase all MDAs 100 feet and LNAV visibility Cat C ¼ SM, and Circling visibility Cat C ¼ SM.</p>	<p>MISSED APPROACH: Climb to 2500 direct RAMOS and hold.</p>
-----------------	---	--

AWOS-3 119.225	AUSTIN APP CON 127.225 317.65	UNICOM 123.05 (CTAF)
--------------------------	---	--------------------------------



SC-5, 20 MAR 2025 to 17 APR 2025

SC-5, 20 MAR 2025 to 17 APR 2025



MISSED APCH FIX		RAMOS	2500	RAMOS															
RAMOS		168°	↑	✧															
348°		4 NM																	
<table border="1"> <thead> <tr> <th>CATEGORY</th> <th>A</th> <th>B</th> <th>C</th> <th>D</th> </tr> </thead> <tbody> <tr> <td>LNAV MDA</td> <td colspan="3">820-1 336 (400-1)</td> <td>NA</td> </tr> <tr> <td>CIRCLING</td> <td>880-1 396 (400-1)</td> <td>1160-1 676 (700-1)</td> <td>1240-2¼ 756 (800-2¼)</td> <td>NA</td> </tr> </tbody> </table>					CATEGORY	A	B	C	D	LNAV MDA	820-1 336 (400-1)			NA	CIRCLING	880-1 396 (400-1)	1160-1 676 (700-1)	1240-2¼ 756 (800-2¼)	NA
CATEGORY	A	B	C	D															
LNAV MDA	820-1 336 (400-1)			NA															
CIRCLING	880-1 396 (400-1)	1160-1 676 (700-1)	1240-2¼ 756 (800-2¼)	NA															