

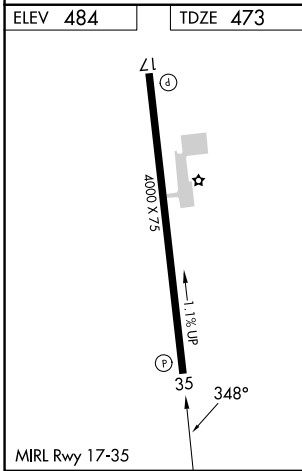
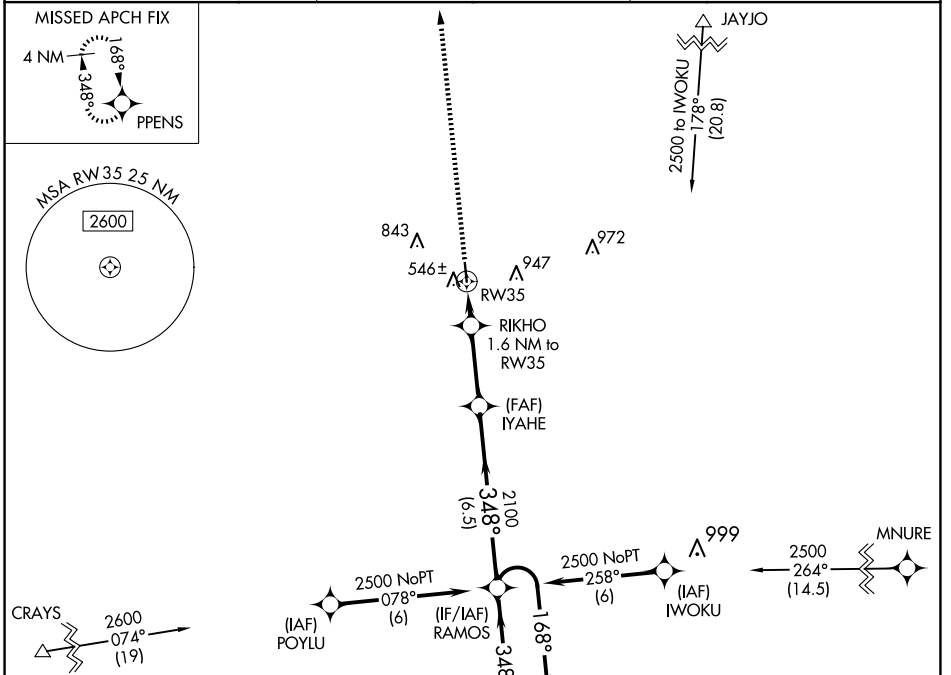
APP CRS 348°	Rwy Idg TDZE Apt Elev	4000 473 484
------------------------	-----------------------------	---

RNAV (GPS) RWY 35

GIDDINGS-LEE COUNTY (GYB)

RNP APCH - GPS.		MISSED APPROACH: Climb to 2500 direct PPENS and hold.
<p>▼ Rwy 35 helicopter visibility reduction below 1 SM NA. Procedure NA at night.</p> <p>▲ When local altimeter setting not received, use AUS altimeter setting and increase all MDAs 100 feet and LNAV visibility Cat C ¼ SM, and Circling visibility Cat C ¼ SM.</p>		

AWOS-3 119.225	AUSTIN APP CON 127.225 317.65	UNICOM 123.05 (CTAF)
--------------------------	---	--------------------------------



ELEV 484	TDZE 473			
2500	PPENS			
Visual Segment - Obstacles.				
<p>RAMOS Holding Pattern</p> <p>4 NM</p> <p>9000 2500</p> <p>168° →</p> <p>← 348°</p> <p>RIKHO 1.6 NM to RW35</p> <p>IYAHE</p> <p>2100</p> <p>1060</p> <p>348°</p> <p>1.6 NM 2.9 NM 6.5 NM</p>				
CATEGORY	A	B	C	D
LNAV MDA	800-1 327 (400-1)			NA
CIRCLING	880-1 396 (400-1)	1160-1 676 (700-1)	1240-2¼ 756 (800-2¼)	NA

SC-5, 20 MAR 2025 to 17 APR 2025

SC-5, 20 MAR 2025 to 17 APR 2025