

APP CRS	Rwy Idg	<b>5003</b>
<b>235°</b>	TDZE	<b>1458</b>
	Apt Elev	<b>1458</b>

# RNAV (GPS) RWY 24

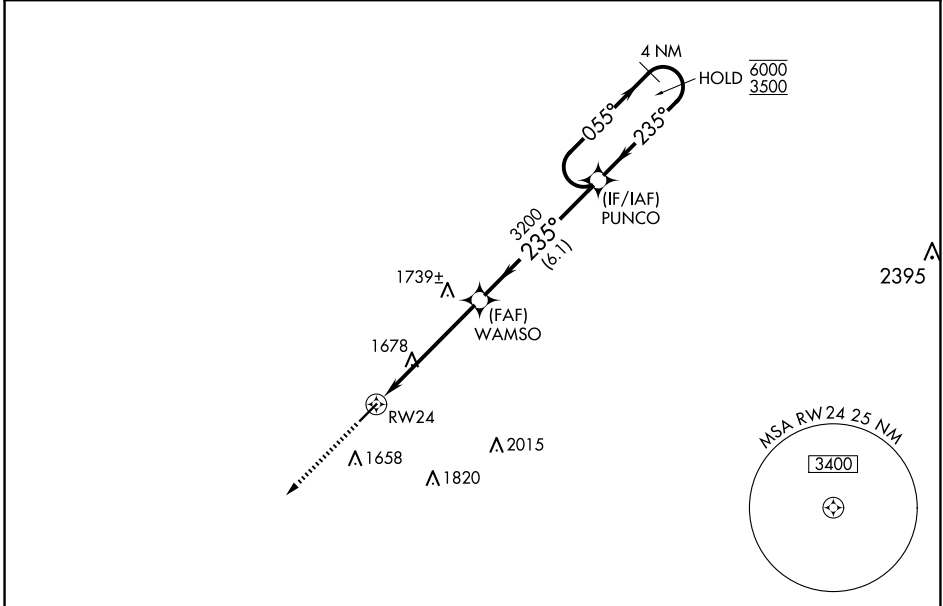
CLARION COUNTY (AXQ)

RNP APCH.

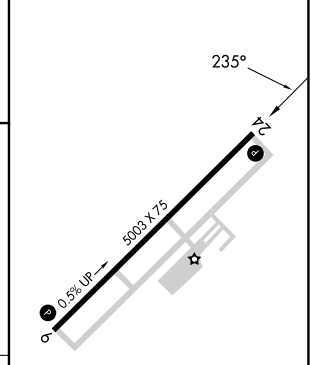
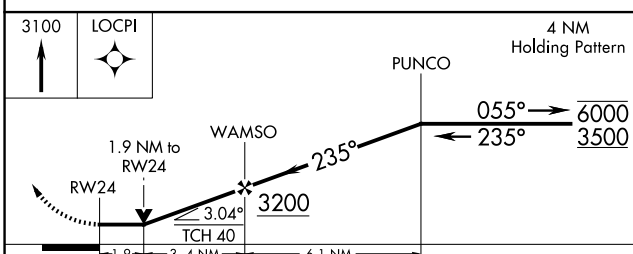
**⚠** **NA** Rwy 24 helicopter visibility reduction below 3/4 SM NA. VDP NA when using Dubois altimeter setting. When local altimeter setting not received, use Dubois altimeter setting and increase all MDA 120 feet and LNAV Cat B/C/D and Circling Cat C visibility 5/8 SM, Circling Cat B visibility 1/4 SM, Cat D visibility 1/2 SM.

**MISSED APPROACH:**  
Climb to 3100 direct  
LOCPI and hold.

AWOS-3 <b>118.275</b>	CLEVELAND CENTER <b>126.725 291.65</b>	UNICOM <b>122.8 (CTAF) 0</b>
--------------------------	---	---------------------------------



ELEV 1458	TDZE 1458
-----------	-----------



CATEGORY	A	B	C	D
LNAV MDA	2100-1 642 (700-1)	2100-1 642 (700-1)	2100-1 642 (700-1)	2100-2 642 (700-2)
CIRCLING	2100-1 642 (700-1)	2100-1 642 (700-1)	2100-1 642 (700-1)	2180-2 722 (800-2 1/4)

MIRL Rwy 6-24 0  
REIL Rwys 6 and 24 0

NE-4, 20 MAR 2025 to 17 APR 2025

NE-4, 20 MAR 2025 to 17 APR 2025