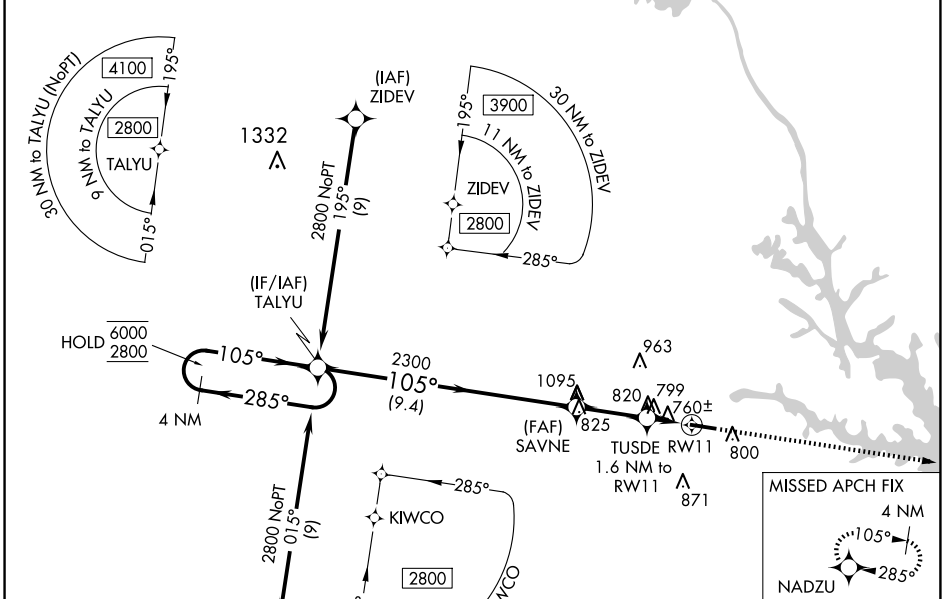


WAAS CH <b>56346</b> <b>W11A</b>	APP CRS <b>105°</b>	Rwy Idg <b>5004</b> TDZE <b>615</b> Apt Elev <b>615</b>
--	------------------------	---

# RNAV (GPS) RWY 11

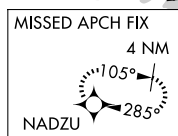
ELBERT COUNTY-PATZ FLD (EBA)

RNP APCH - GPS.		MISSED APPROACH: Climb to 2500 direct NADZU and hold.
<p><b>⚠</b> Procedure NA at night. Rwy 11 helicopter visibility reduction below 1 SM NA.</p>		
AWOS-3 <b>118.15</b>	ATLANTA CENTER <b>127.5 316.05</b>	UNICOM <b>122.8 (CTAF) 0</b>



SE-4, 20 MAR 2025 to 17 APR 2025

SE-4, 20 MAR 2025 to 17 APR 2025



ELEV 615	TDZE 615																				
<p>4 NM MISSED APCH FIX NADZU</p>																					
<p>4 NM Holding Pattern TALYU</p> <p>6000 ← 285° 2800 → 105°</p>	<p>2500 NADZU</p>																				
<p>SAVNE</p> <p>TUSDE 1.6 NM to RW11</p> <p>3.75° TCH 42</p> <p>2300</p> <p>1300</p> <p>RW11</p> <p>9.4 NM   2.5 NM   1.6 NM</p>	<p>5004 X 75</p> <p>105°</p>																				
<table border="1"> <thead> <tr> <th>CATEGORY</th> <th>A</th> <th>B</th> <th>C</th> <th>D</th> </tr> </thead> <tbody> <tr> <td>LP MDA</td> <td>1060-1</td> <td>445 (500-1)</td> <td>1060-1<math>\frac{3}{8}</math> 445 (500-1<math>\frac{3}{8}</math>)</td> <td>NA</td> </tr> <tr> <td>LNAV MDA</td> <td>1120-1</td> <td>505 (600-1)</td> <td>1120-1<math>\frac{3}{8}</math> 505 (600-1<math>\frac{3}{8}</math>)</td> <td>NA</td> </tr> <tr> <td><b>C</b> CIRCLING</td> <td>1160-1</td> <td>545 (600-1)</td> <td>1280-1<math>\frac{3}{4}</math> 665 (700-1<math>\frac{3}{4}</math>)</td> <td>NA</td> </tr> </tbody> </table>	CATEGORY	A	B	C	D	LP MDA	1060-1	445 (500-1)	1060-1 $\frac{3}{8}$ 445 (500-1 $\frac{3}{8}$ )	NA	LNAV MDA	1120-1	505 (600-1)	1120-1 $\frac{3}{8}$ 505 (600-1 $\frac{3}{8}$ )	NA	<b>C</b> CIRCLING	1160-1	545 (600-1)	1280-1 $\frac{3}{4}$ 665 (700-1 $\frac{3}{4}$ )	NA	<p>MIRL Rwy 11-29 0</p>
CATEGORY	A	B	C	D																	
LP MDA	1060-1	445 (500-1)	1060-1 $\frac{3}{8}$ 445 (500-1 $\frac{3}{8}$ )	NA																	
LNAV MDA	1120-1	505 (600-1)	1120-1 $\frac{3}{8}$ 505 (600-1 $\frac{3}{8}$ )	NA																	
<b>C</b> CIRCLING	1160-1	545 (600-1)	1280-1 $\frac{3}{4}$ 665 (700-1 $\frac{3}{4}$ )	NA																	