

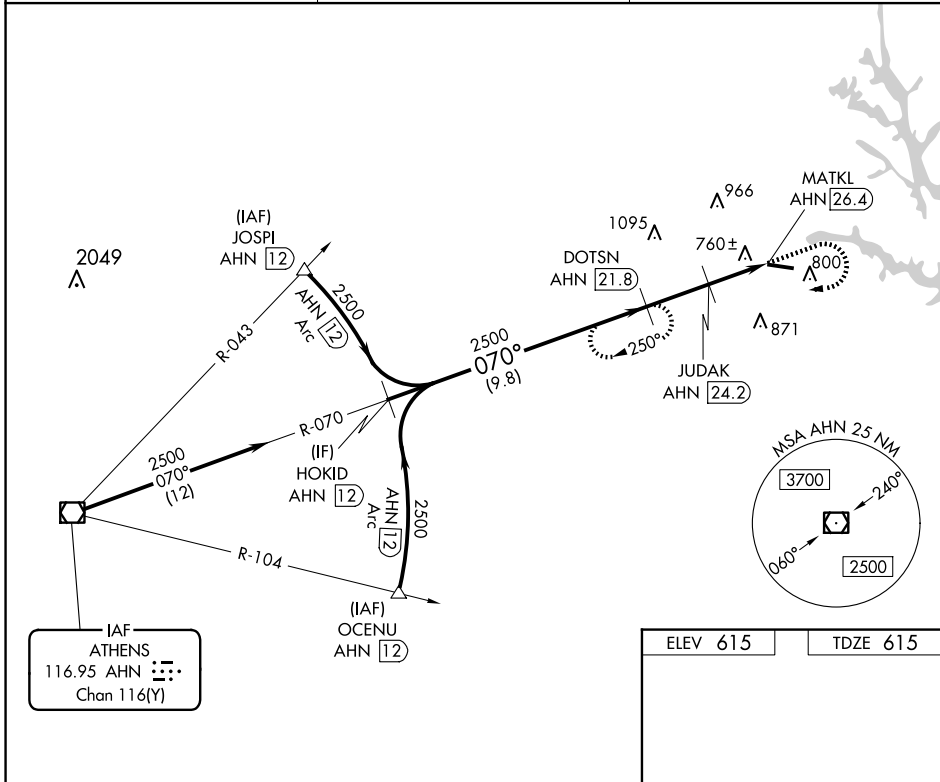
VOR/DME AHN 116.95 Chan 116 (Y)	APP CRS 070°	Rwy Idg TDZE Apt Elev 5004 615 615
---	------------------------	--

VOR RWY 11

ELBERT COUNTY-PATZ FLD (EBA)

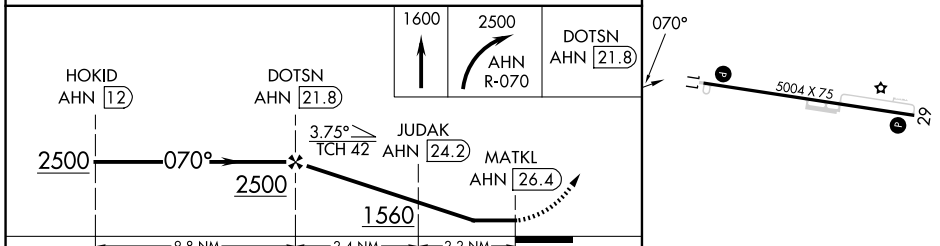
DME required.	MISSED APPROACH: Climb to 1600 then climbing right turn to 2500 on AHN VOR/DME R-070 to DOTSN/AHN 21.8 DME and hold.
---------------	--

AWOS-3 118.15	ATLANTA CENTER 127.5 316.05	UNICOM 122.8 (CTAF) 1
-------------------------	---------------------------------------	--



IAF
ATHENS
116.95 AHN
Chan 116(Y)

ELEV 615	TDZE 615
----------	----------



CATEGORY	A	B	C	D
S-11	1200-1	585 (600-1)	1200-1 $\frac{3}{4}$ 585 (600-1 $\frac{3}{4}$)	NA
C CIRCLING	1200-1 585 (600-1)	1200-1 $\frac{1}{4}$ 585 (600-1 $\frac{1}{4}$)	1280-2 665 (700-2)	NA

MIRL Rwy 11-29 **1**

SE-4, 20 MAR 2025 to 17 APR 2025

SE-4, 20 MAR 2025 to 17 APR 2025