

APP CRS	Rwy Idg	5000
321°	TDZE	3727
	Apt Elev	3730

RNAV (GPS) RWY 32

HOLYOKE (HEQ)

RNP APCH-GPS.

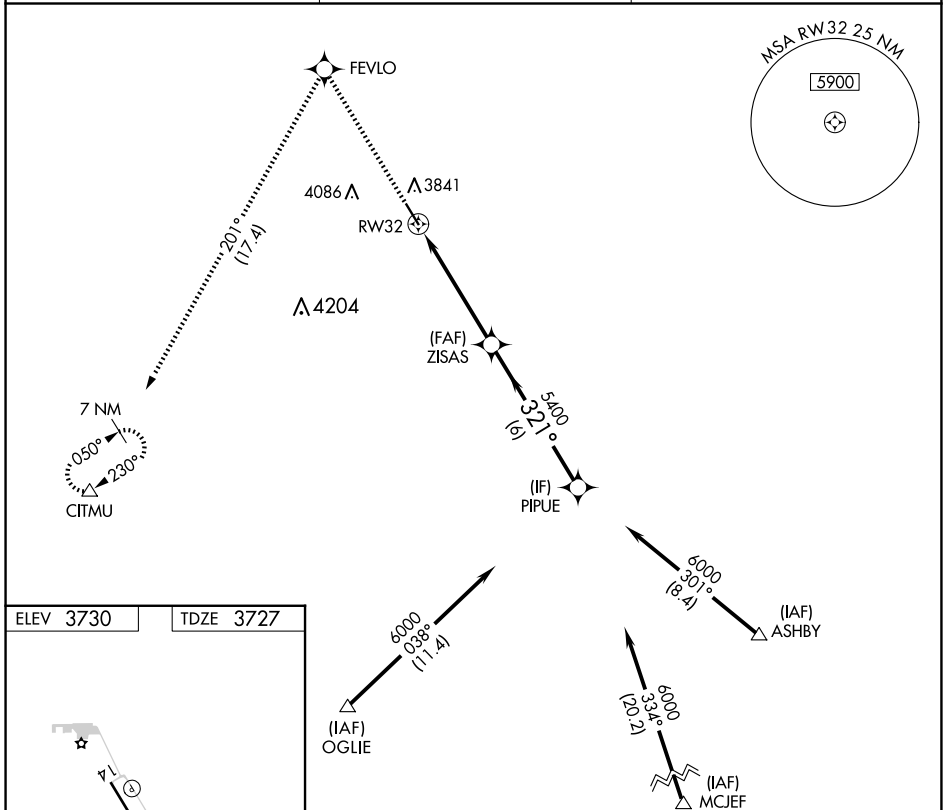
▼ VDP NA when using Sidney Muni/Lloyd W. Carr Fld altimeter setting.
 ▲ When local altimeter setting not received, use Sidney altimeter setting and increase all MDAs 200 feet and visibility Cat C/D $\frac{3}{8}$ SM. Rwy 32 helicopter visibility reduction below $\frac{3}{4}$ SM NA.

MISSED APPROACH: Climb to 6500 direct FEVLO and on track 201° to CITMU and hold.

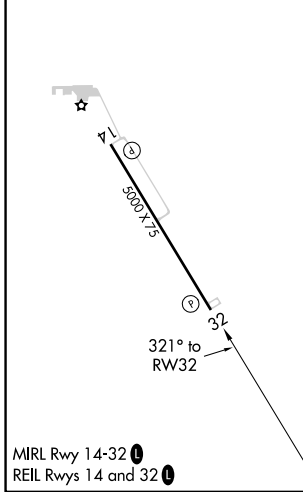
AWOS-3
119.275

DENVER CENTER
118.475 225.4

UNICOM
122.7 (CTAF) 0



ELEV 3730	TDZE 3727
-----------	-----------



6500	FEVLO	tr 201°	CITMU	PIPUE
↑	✦		△	
0.7 NM to RW32		0.7 NM to RW32		6000
RW32		ZISAS		
3.05° TCH 40		5400		
0.7 NM		4.4 NM		6 NM
CATEGORY	A	B	C	D
LNAV MDA	4160-1 433 (500-1)			4160-1¼ 433 (500-1¼)

SW-1, 20 MAR 2025 to 17 APR 2025

SW-1, 20 MAR 2025 to 17 APR 2025