

APP CRS	Rwy Idg	<b>3998</b>
<b>028°</b>	TDZE	<b>268</b>
	Apt Elev	<b>270</b>

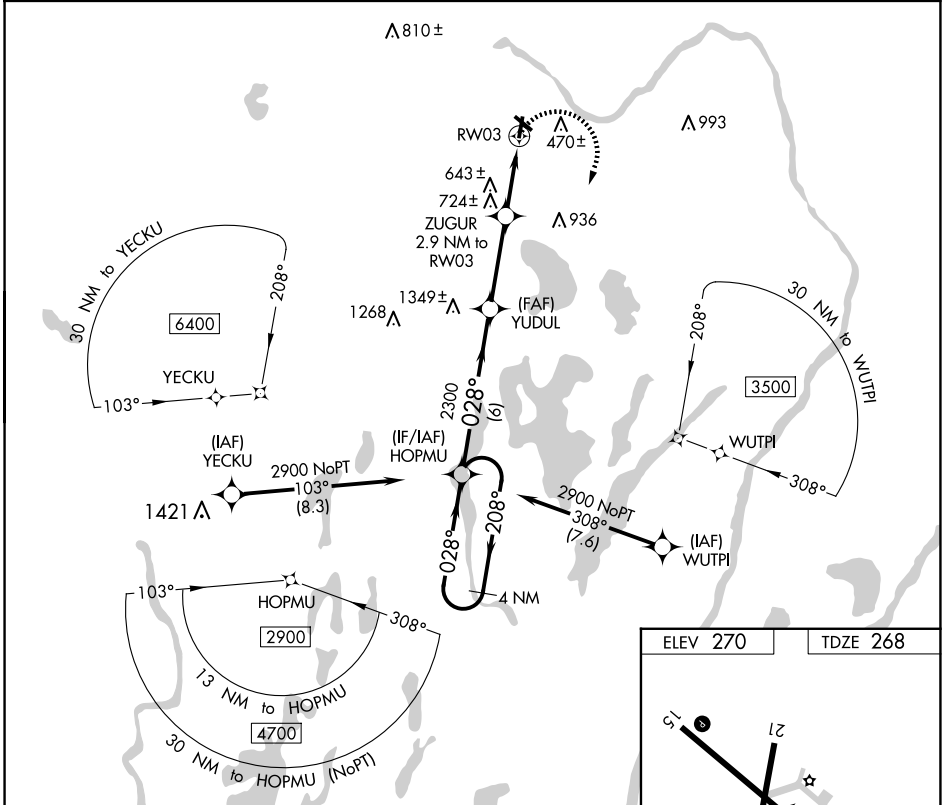
# RNAV (GPS) RWY 3

CENTRAL MAINE/NORRIDGEWOCK (OWK)

**▽** DME/DME RNP-0.3 NA. When local altimeter setting not received, use Augusta State altimeter setting and increase all MDA 80 feet; increase LNAV Cat B visibility ¼ mile and Cat C visibility ½ mile and Circling Cat B visibility ¼ mile and Cat C visibility ½ mile.  
**▲ NA** Procedure NA at night. Helicopter visibility reduction below 1 SM NA.

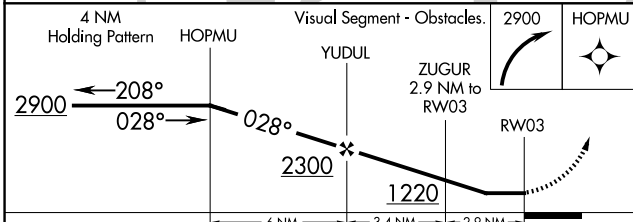
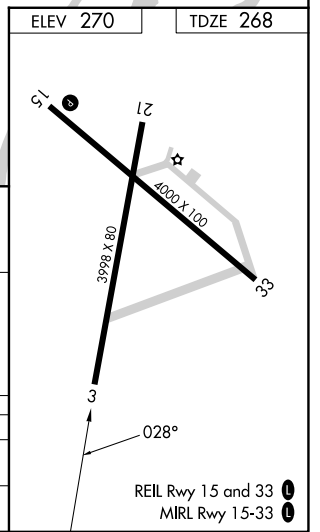
MISSED APPROACH: Climbing right turn to 2900 direct HOPMU and hold.

AWOS-AV <b>123.075</b>	PORTLAND APP CON ★ <b>128.35 299.2</b>	UNICOM <b>122.8 (CTAF) 0</b>
---------------------------	---	---------------------------------



NE-1, 20 MAR 2025 to 17 APR 2025

NE-1, 20 MAR 2025 to 17 APR 2025



CATEGORY	A	B	C	D
LNAV MDA	980-1	712 (800-1)	980-2 712 (800-2)	NA
<b>C</b> CIRCLING	980-1	710 (800-1)	1080-2 ¼ 810 (900-2 ¼)	NA