

# KUSSO ONE DEPARTURE (RNAV)

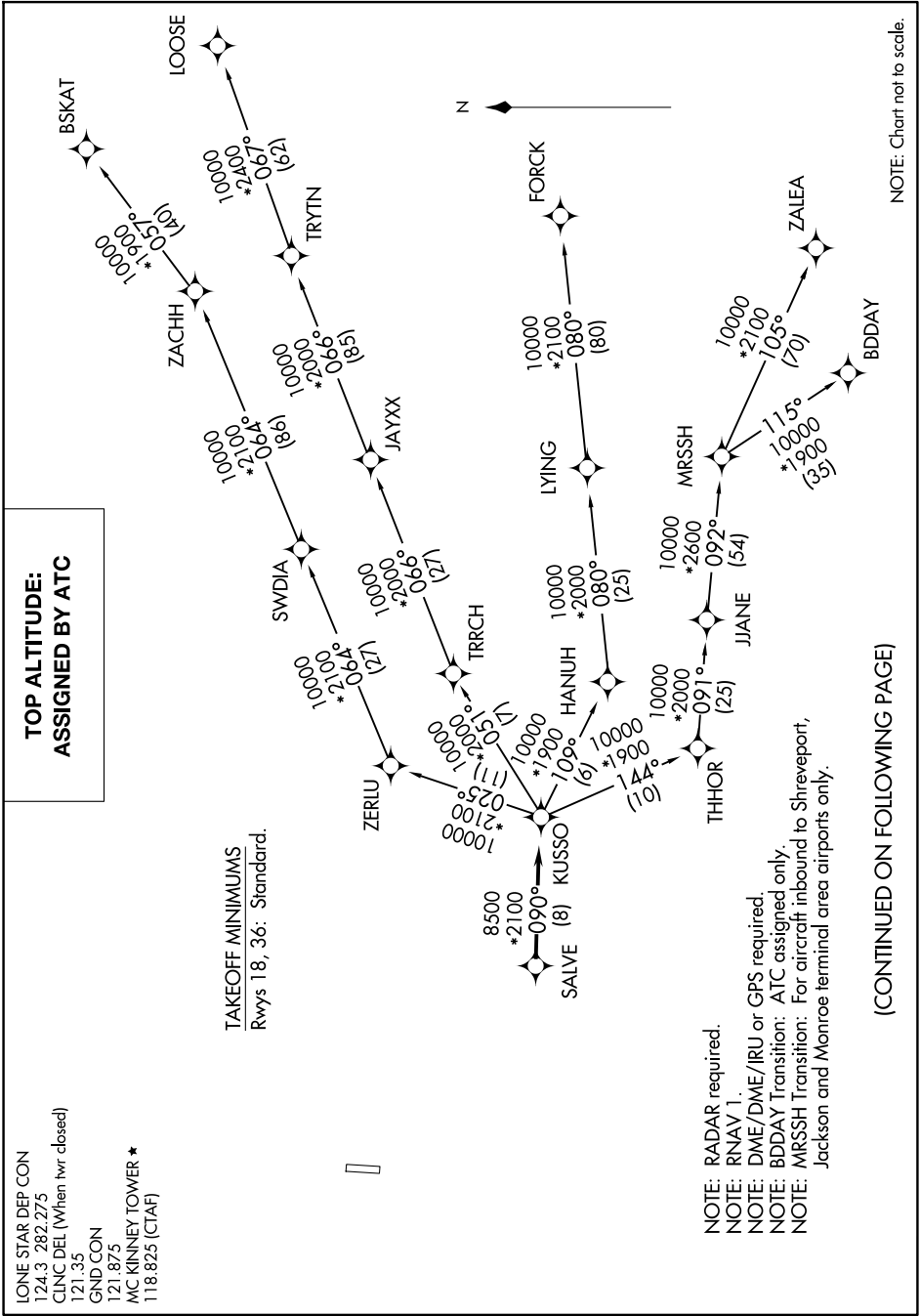
DALLAS, TEXAS

SC-2, 20 MAR 2025 to 17 APR 2025

**TOP ALTITUDE:  
ASSIGNED BY ATC**

LONE STAR DEP CON  
124.3 282.275  
CLINC DEL (When twr closed)  
121.35  
GND CON  
121.875  
MCKINNEY TOWER ★  
118.825 (CTAF)

TAKEOFF MINIMUMS  
Rwys 18, 36: Standard.



NOTE: RADAR required.  
NOTE: RNAV 1.  
NOTE: DME/DME/IRU or GPS required.  
NOTE: BDDAY Transition: ATC assigned only.  
NOTE: MRSSH Transition: For aircraft inbound to Shreveport, Jackson and Monroe terminal area airports only.

(CONTINUED ON FOLLOWING PAGE)

NOTE: Chart not to scale.

SC-2, 20 MAR 2025 to 17 APR 2025