

(BEAVY6.BEAVY) 24081

AL-6707 (FAA)

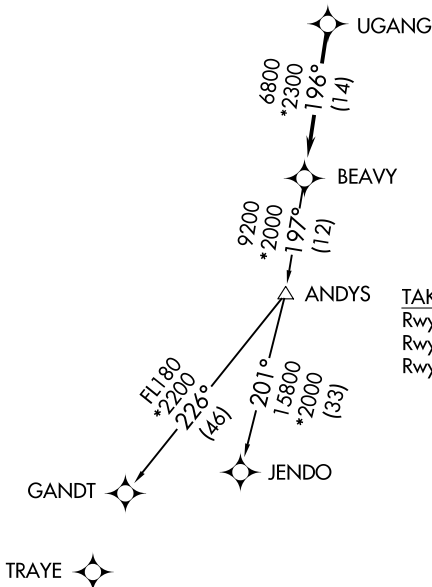
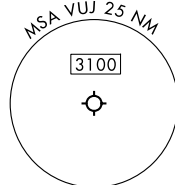
STANLY COUNTY (VUJ)  
ALBEMARLE, NORTH CAROLINA

# BEAVY SIX DEPARTURE (RNAV)

CHARLOTTE DEP CON  
128.325 307.8  
AWOS-3  
128.175  
CLNC DEL  
121.75 254.375  
GND CON  
121.75 254.375  
STANLY COUNTY TOWER★  
126.275 (CTAF) 291.9

RNAV 1-DME/DME/IRU or GPS.  
RADAR required.

**TOP ALTITUDE:  
3000**



**TAKEOFF MINIMUMS**  
Rwys 4L, 22R: NA-Environmental.  
Rwy 22L: Standard.  
Rwy 4R: 300-1¾ or standard with  
minimum climb of 315' per NM  
to 1000.

- NOTE: For turbo jets only.
- NOTE: If unable to accept climb rates, advise ATC on initial contact.
- NOTE: Transponder code will be issued via PDC or Charlotte CLNC DEL.
- NOTE: Upon reaching 10000 MSL, accelerate to and maintain 280K, if unable advise ATC.

NOTE: Chart not to scale.

## DEPARTURE ROUTE DESCRIPTION

Climb on heading assigned by ATC, on RADAR vectors to UGANG, then on depicted route to BEAVY. Then on assigned transition maintain 3000, expect clearance to filed altitude within 10 minutes after departure.

GANDT TRANSITION (BEAVY6.GANDT)  
JENDO TRANSITION (BEAVY6.JENDO)

**BEAVY SIX DEPARTURE (RNAV)**

(BEAVY6.BEAVY) 21MAR24

ALBEMARLE, NORTH CAROLINA  
STANLY COUNTY (VUJ)

SE-2, 20 MAR 2025 to 17 APR 2025

SE-2, 20 MAR 2025 to 17 APR 2025