

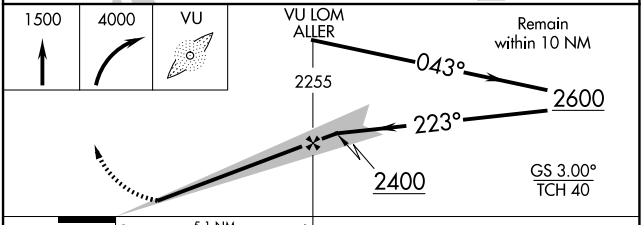
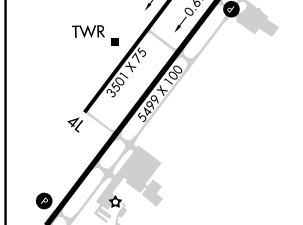
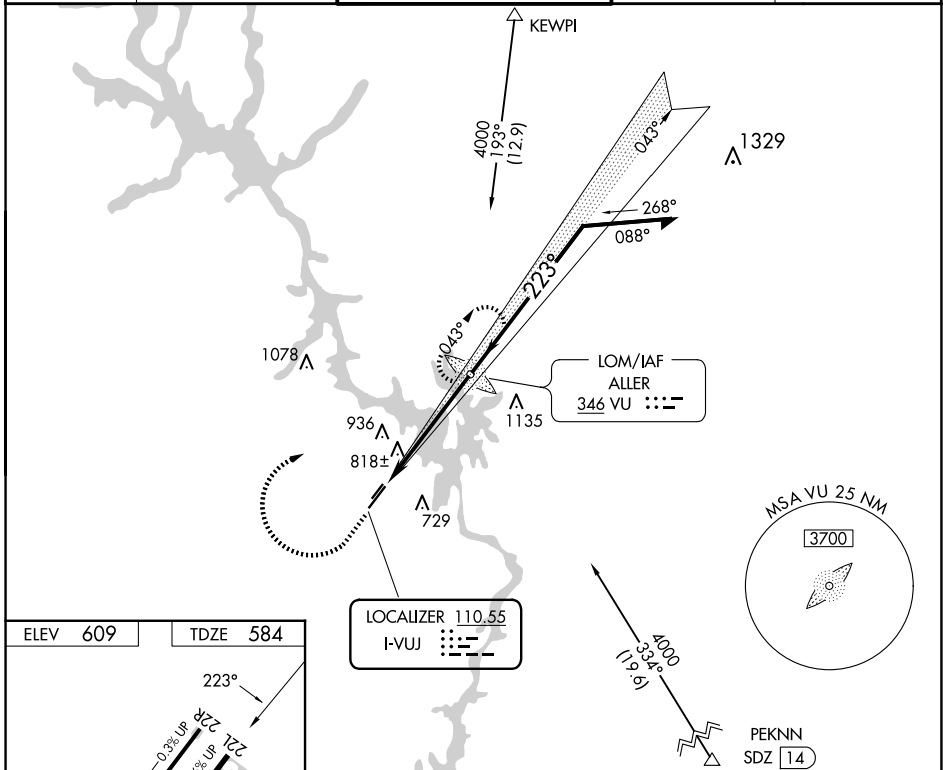
LOC I-VUJ 110.55	APP CRS 223°	Rwy Idg TDZE Apt Elev	5499 584 609
----------------------------	------------------------	-----------------------------	---

ILS or LOC RWY 22L

STANLY COUNTY (VUJ)

ADF required.	MISSED APPROACH: Climb to 1500 then climbing right turn to 4000 direct ALLER LOM and hold, continue climb-in-hold to 4000.
Circling Rwy 4L, 22R NA at night. Rwy 22L helicopter visibility reduction below ¾ SM NA.	

AWOS-3 128.175	CHARLOTTE APP CON 128.325 307.8	STANLY COUNTY TOWER★ 126.275 (CTAF) 0 291.9	GND CON 121.75 254.375	CLNC DEL 121.75 254.375
--------------------------	---	---	----------------------------------	-----------------------------------



FAF to MAP 5.1 NM					
Knots	60	90	120	150	180
Min:Sec	5:06	3:24	2:33	2:02	1:42
CIRCLING	1260-1	651 (700-1)	1100-1 516 (500-1)	1100-1 516 (500-1)	1260-1 651 (700-1)
S-ILS 22L	916-1		332 (400-1)		
S-LOC 22L	1100-1 516 (500-1)		1100-1 516 (500-1)		
CIRCLING	1260-1 651 (700-1)		1260-1 651 (700-1)		1380-2 771 (800-2)

SE-2, 20 MAR 2025 to 17 APR 2025

SE-2, 20 MAR 2025 to 17 APR 2025