

RNAV (GPS) RWY 6 MONTAUK (MTP)

APP CRS	Rwy Idg	2944
062°	TDZE	6
	Apt Elev	7

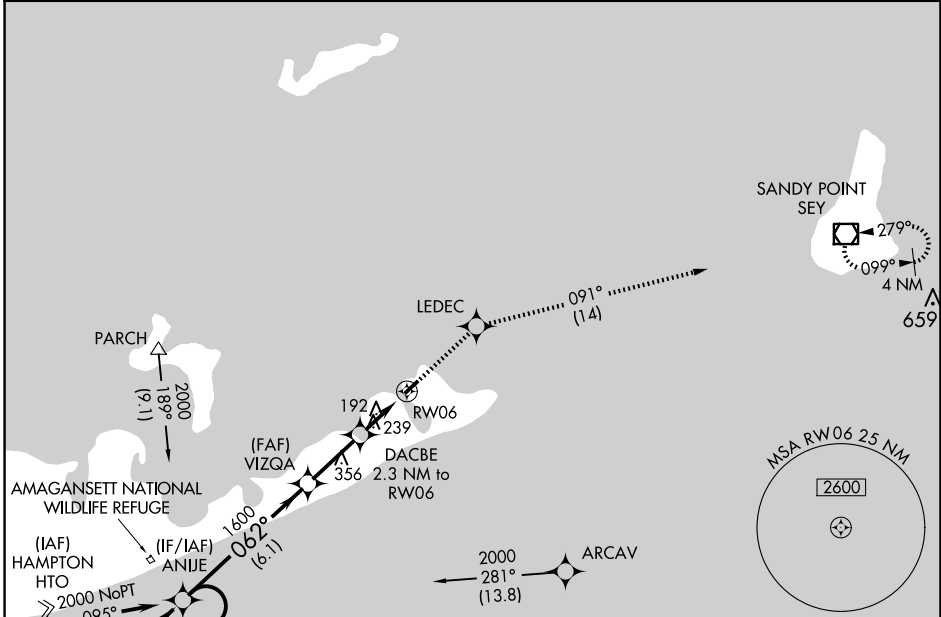
RNP APCH - GPS.

▽ Use Graton-New London altimeter setting; when not received, use Block Island State altimeter setting; increase all MDA 20 feet and visibility LNAV Cats C and D 1/8 SM and Circling Cat D 1/4 SM. Procedure NA at night. Helicopter visibility reduction below 1 SM NA.

▲ NA

MISSED APPROACH:
Climb to 2000 direct LEDEC and on track 091° to SEY VOR/DME and hold.

GON ASOS 127.0	NEW YORK APP CON 125.975 343.65	UNICOM 122.7 (CTAF)	121.7 0
--------------------------	---	-------------------------------	----------------

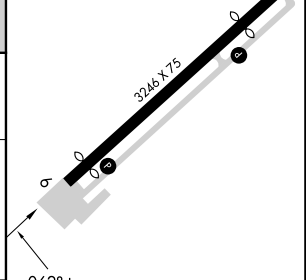
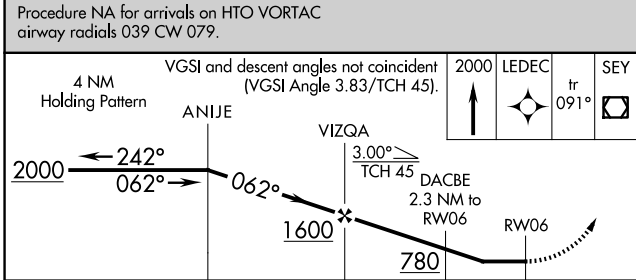


NE-2, 20 MAR 2025 to 17 APR 2025

NE-2, 20 MAR 2025 to 17 APR 2025

Procedure NA for arrivals on HTO VORTAC airway radials 039 CW 079.

ELEV 7	TDZE 6
--------	--------



CATEGORY	A	B	C	D
LNAV MDA	540-1	534 (600-1)	540-1½	534 (600-1½)
CIRCLING	580-1	573 (600-1)	580-1½ 573 (600-1½)	740-2¼ 733 (800-2¼)

MIRL Rwy 6-24 0