

WAAS CH 50334 W19A	APP CRS 193°	Rwy Idg 3060 TDZE 1037 Apt Elev 1042
--	------------------------	---

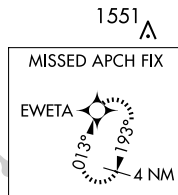
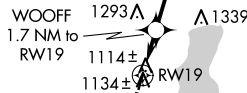
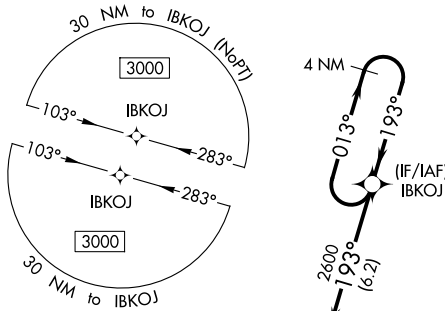
RNAV (GPS) RWY 19

STOCKTON LAKE (MO3)

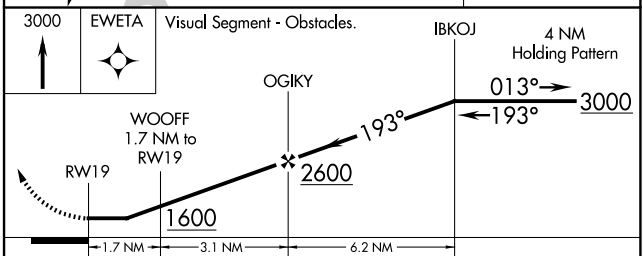
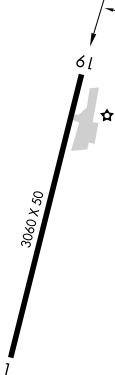
NA Procedure NA at night. Use Nevada altimeter setting; when not received, use Springfield altimeter setting and increase all MDA 40 feet. DME/DME RNP-0.3 NA. Helicopter visibility reduction below 1 SM NA.

MISSED APPROACH: Climb to 3000 direct EWETA and hold.

NVD AWOS-3PT 119.175	SPRINGFIELD APP CON 124.95	CTAF 122.9
--------------------------------	--------------------------------------	----------------------



ELEV 1042	TDZE 1037
-----------	-----------



CATEGORY	A	B	C	D
LP MDA	1460-1	423 (500-1)		NA
LNAV MDA	1480-1	443 (500-1)		NA
CIRCLING	1560-1 518 (600-1)	1700-1 658 (700-1)		NA