

APP CRS	Rwy Idg	N/A
280°	TDZE	N/A
	Apt Elev	828

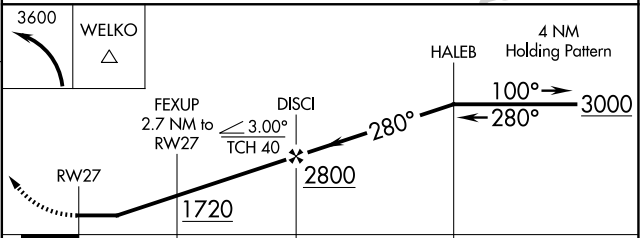
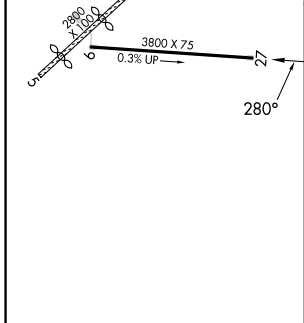
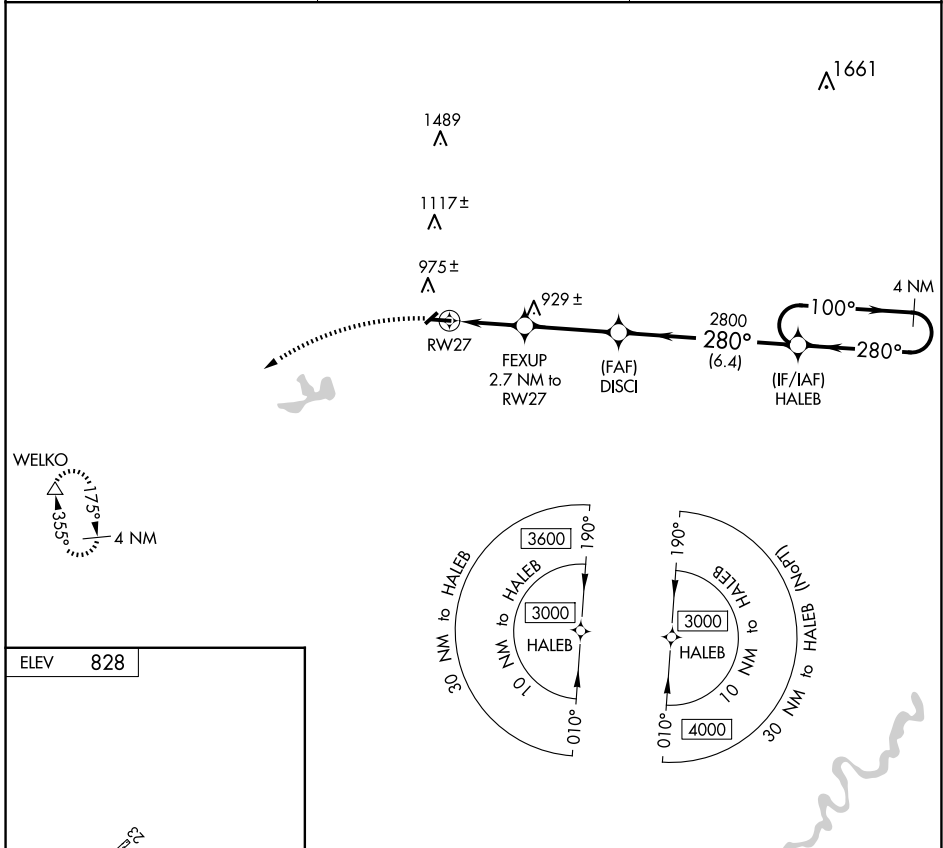
RNAV (GPS)-A

BALDWIN MUNI (7D3)

⚠ Circling NA to Rwy 5 and 23. DME/DME RNP-0.3 NA.
⚠ NA Helicopter visibility reduction below 1 SM NA.
 Use Fremont Muni altimeter setting. Procedure NA at night.

MISSED APPROACH: Climbing left turn to 3600 direct WELKO and hold.

FFX AWOS-3 118.775	MINNEAPOLIS CENTER 120.85 322.35	CTAF 122.9
------------------------------	--	----------------------



CATEGORY	A	B	C	D
C CIRCLING	1400-1	572 (600-1)	1400-1½ 572 (600-1½)	NA

EC-1, 20 MAR 2025 to 17 APR 2025

EC-1, 20 MAR 2025 to 17 APR 2025