

RNAV (GPS) RWY 27

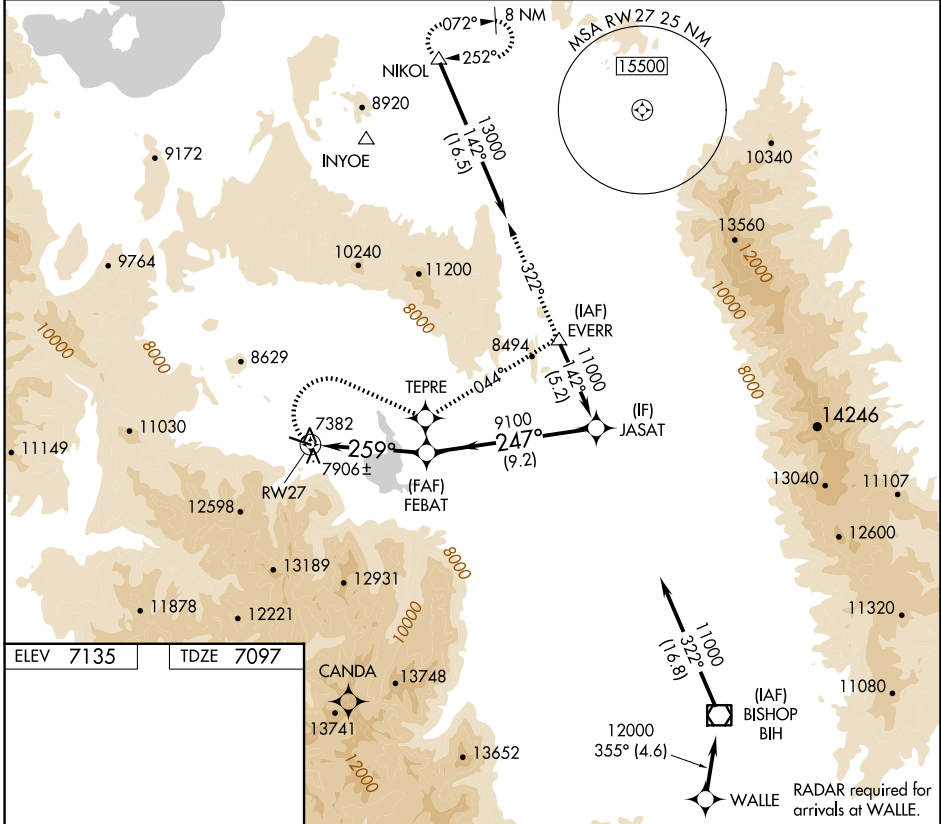
MAMMOTH YOSEMITE (MMH)

APP CRS 259°	Rwy Idg 7000
	TDZE 7097
	Apt Elev 7135

⚠ Circling NA at night. Circling NA south of Rwy 9-27.
⚠ DME/DME RNP-0.3 NA. When local altimeter setting not received, procedure NA.

MISSED APPROACH: Climbing right turn to 13000 direct TEPRE and via track 044° to EVERR and via track 322° to NIKOL and hold.

AWOS-3 118.05	OAKLAND CENTER 125.75 284.65	UNICOM 122.8 (CTAF) ①
-------------------------	--	---------------------------------



ELEV 7135	TDZE 7097
-----------	-----------

REIL Rwy 27 ①
 MIRL Rwy 9-27 ①

13000	TEPRE	tr 044°	EVERR	tr 322°	NIKOL	JASAT
	⬠	⬠	⬠	⬠	⬠	⬠
	4 NM to RWY 27		≤ 2.99° TCH 45		11000	
	4 NM		2.3 NM		9.2 NM	
CATEGORY	A		B		C	
LNAV MDA	8380-1¼ 1283 (1300-1¼)		8380-1½ 1283 (1300-1½)		8380-3 1283 (1300-3)	
CIRCLING	8380-1¼ 1245 (1300-1¼)		8380-1½ 1245 (1300-1½)		8540-3 1405 (1500-3)	
					Procedure Turn NA	

SW-2, 20 MAR 2025 to 17 APR 2025

SW-2, 20 MAR 2025 to 17 APR 2025