

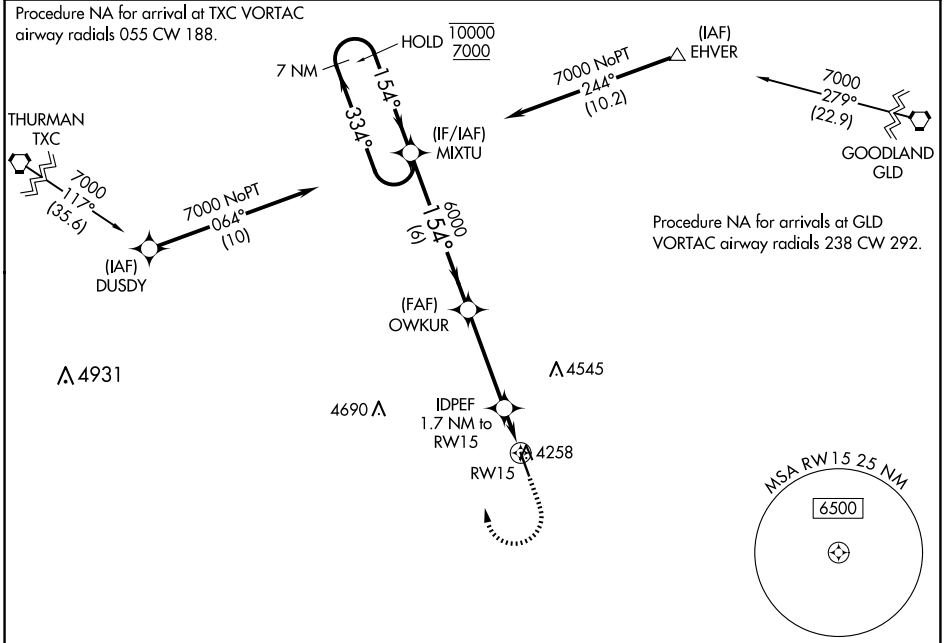
WAAS CH <b>72999</b> W15A	APP CRS <b>154°</b>	Rwy Idg <b>5199</b> TDZE <b>4218</b> Apt Elev <b>4218</b>
---------------------------------	------------------------	---

# RNAV (GPS) RWY 15

KIT CARSON COUNTY (ITR)

RNP APCH - GPS.	MISSED APPROACH: Climb to 4700 then climbing right turn to 7000 direct MIXTU and hold.
<p>▼ For uncompensated Baro-VNAV systems, LNAV/VNAV NA below -23°C or above 54°C.</p>	

ASOS <b>135.225</b>	DENVER CENTER <b>132.7 226.675</b>	UNICOM <b>122.8 (CTAF) 0</b>
------------------------	---------------------------------------	---------------------------------



SW-1, 20 MAR 2025 to 17 APR 2025

SW-1, 20 MAR 2025 to 17 APR 2025

ELEV 4218		TDZE 4218	
<p>VGSI and RNAV glidepath not coincident (VGSI Angle 3.00/TCH 31).</p> <p>7 NM Holding Pattern</p> <p>COUGAR MOA</p>			
<p>10000 ← 334°</p> <p>7000 ← 154°</p> <p>GP 3.00° TCH 40</p>		<p>4700</p> <p>7000</p> <p>MIXTU</p>	
<p>6000</p> <p>OWKUR</p> <p>IDPEF 1.7 NM to RW15</p> <p>4800</p>		<p>0.9 NM to RW15</p> <p>RW15</p>	
6 NM		3.8 NM	
0.9 NM		0.9 NM	
CATEGORY	A	B	C
LPV DA		4468-1	250 (300-1)
LNAV/VNAV DA		4468-1	250 (300-1)
LNAV MDA		4520-1	302 (400-1)
CIRCLING	4580-1 362 (400-1)	4700-1 482 (500-1)	4860-1¾ 642 (700-1¾)
			4860-2 642 (700-2)

