

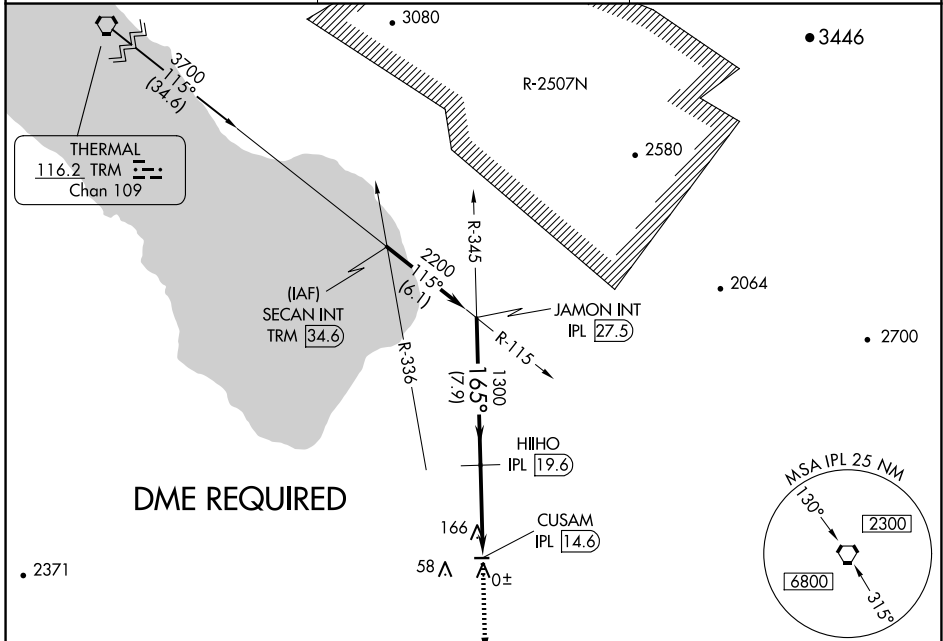
VORTAC IPL <b>115.9</b> Chan <b>106</b>	APP CRS <b>165°</b>	Rwy Idg TDZE Apt Elev	<b>N/A</b> <b>N/A</b> <b>-129</b>
---	------------------------	-----------------------------	---

**VOR-B**  
BRAWLEY MUNI (BWC)

**▼** Use Imperial County altimeter setting.  
**▲** NA DME Required.  
Circling Rwy 8 NA at night.

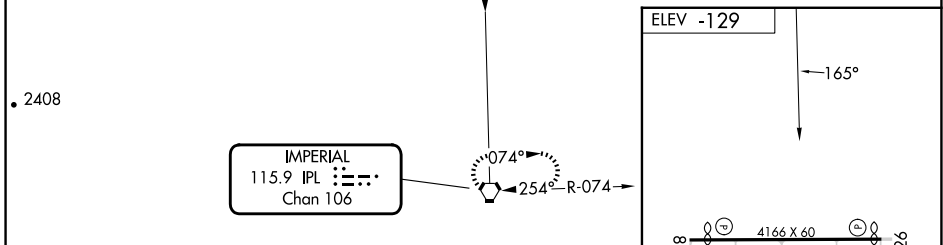
MISSED APPROACH: Climb to 3000 direct IPL VORTAC and hold.

IPL ASOS <b>132.175</b>	YUMA CERAP <b>128.55 292.2</b>	CTAF <b>122.9</b>
----------------------------	-----------------------------------	----------------------



SW-3, 20 MAR 2025 to 17 APR 2025

SW-3, 20 MAR 2025 to 17 APR 2025



CATEGORY	A	B	C	D
	560-1 689 (700-1)		NA	
CIRCLING	560-1 689 (700-1)		NA	

