

APP CRS **175°**
 Rwy Idg **2801**
 TDZE **1056**
 Apt Elev **1056**

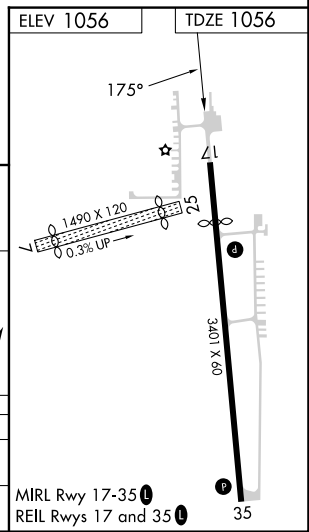
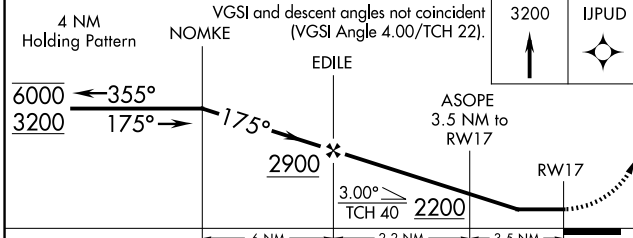
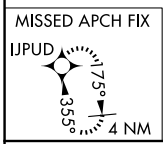
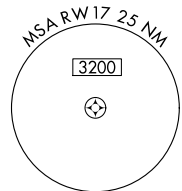
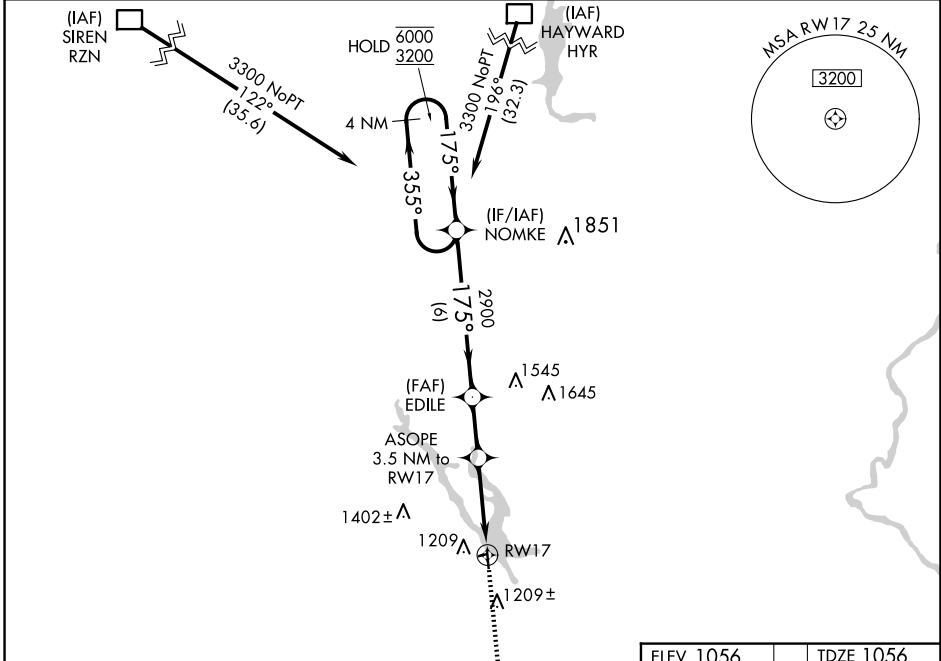
AL- 6935 (FAA)

RNAV (GPS) RWY 17
 CHETEK MUNI/SOUTHWORTH (Y23)

RNP APCH.
 Procedure NA at night. Rwy 17 helicopter visibility reduction below 1 SM NA. Circling NA to Rwy 7 and 25.

MISSED APPROACH: Climb to 3200 direct IJPUD and hold.

AWOS-3P 119.05	MINNEAPOLIS CENTER 125.3 335.6	CTAF 122.9
--------------------------	--	----------------------



CATEGORY	A	B	C	D
RNAV MDA	1640-1	584 (600-1)	1640-1¾ 584 (600-1¾)	NA
CIRCLING	1640-1	584 (600-1)	1740-2 684 (700-2)	NA

EC-3, 20 MAR 2025 to 17 APR 2025

EC-3, 20 MAR 2025 to 17 APR 2025