

WAAS CH 49016 W34A	APP CRS 346°	Rwy Idg TDZE Apt Elev	6101 5012 5024
--	------------------------	-----------------------------	---

RNAV (GPS) RWY 34

MC CALL MUNI (MYL)

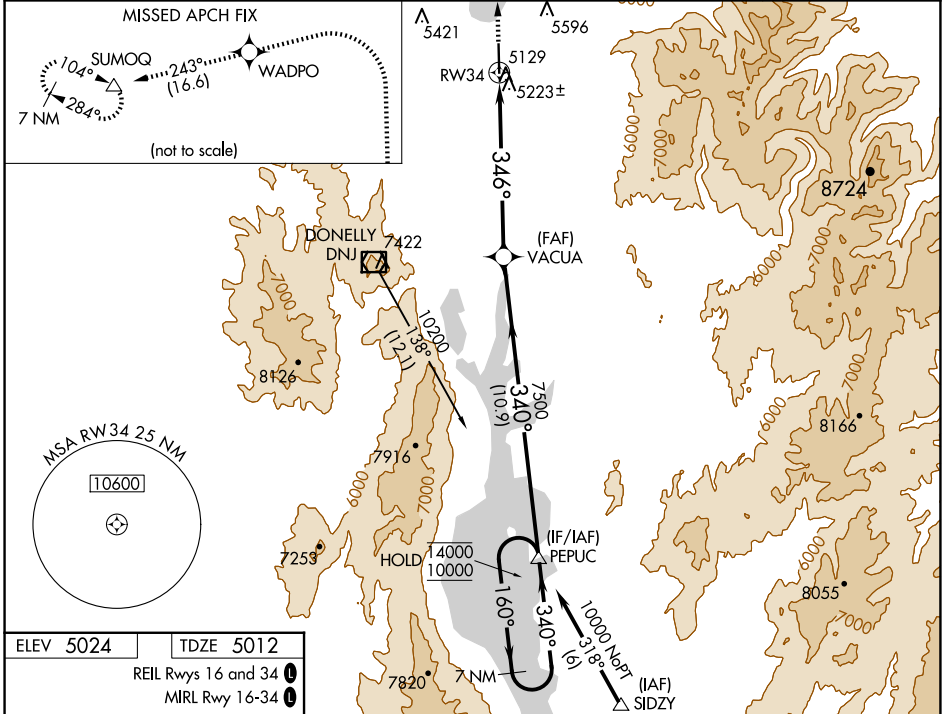
RNP APCH - GPS.

For uncompensated Baro-VNAV systems, LNAV/VNAV NA below -24°C or above 40°C. When local altimeter setting not received, procedure NA. Rwy 34 helicopter visibility reduction below 3/4 SM NA. Circling Rwy 16 NA at night.

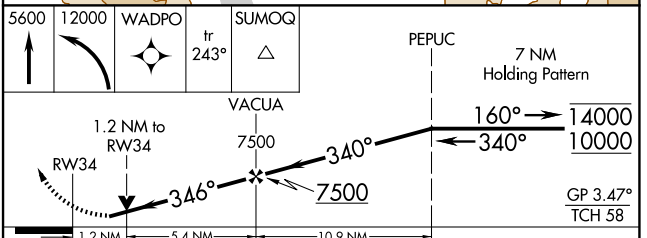
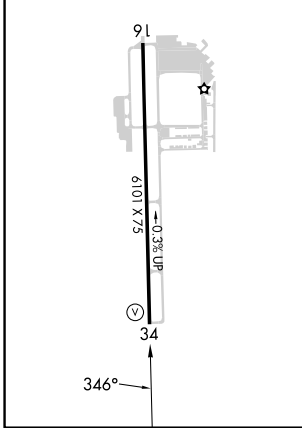
MISSED APPROACH: Climb to 5600, then climbing left turn to 2000 direct WADPO and on track 243° to SUMOQ and hold, continue climb-in-hold to 12000.

*Missed approach requires minimum climb of 265 feet per NM to 6380.

ASOS 119.925	SALT LAKE CENTER 128.05 306.95	UNICOM 122.8 (CTAF) 0
------------------------	--	---------------------------------



ELEV 5024	TDZE 5012
-----------	-----------



CATEGORY	A		B		C		D	
	LPV DA	5375-1		363 (400-1)				
LNAV/VNAV DA	5683-1½		671 (700-1½)					
LNAV MDA*	5520-1		508 (500-1)		5520-1½		508 (500-1½)	
LNAV MDA	5680-1		668 (700-1)		5680-1½		668 (700-1½)	
CIRCLING	5700-1 676 (700-1)		5920-1¼ 896 (900-1¼)		6140-3 1116 (1200-3)		6660-3 1636 (1700-3)	

NW-1, 20 MAR 2025 to 17 APR 2025

NW-1, 20 MAR 2025 to 17 APR 2025