

VORTAC EED 115.2 Chan 99	APP CRS 335°	Rwy Idg 8500 TDZE 707 Apt Elev 707
----------------------------------------------	------------------------	---------------------------------------------------------------

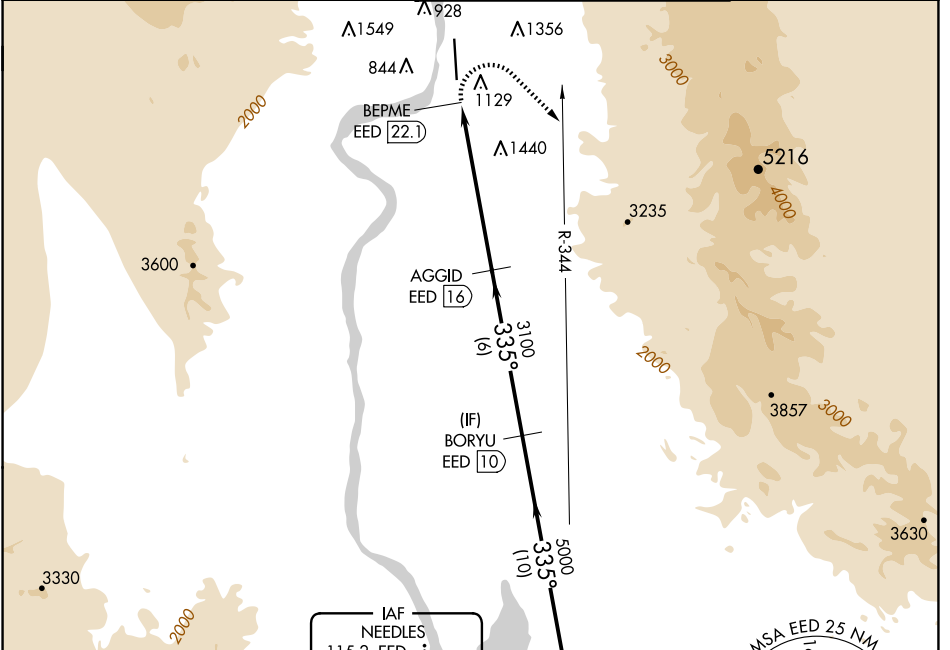
VOR RWY 34

LAUGHLIN/BULLHEAD INTL (IFP)

⚠ Rwy 34 helicopter visibility reduction below ¼ SM NA. DME required. Circling Rwy 16 NA at night.

MISSED APPROACH: Climbing right turn to 6000 on heading 120° and EED VORTAC R-344 to EED VORTAC and hold.

ATIS 119.825	LOS ANGELES CENTER 134.65 360.65	BULLHEAD TOWER★ 123.9 (CTAF) 0	GND CON 118.25
------------------------	--------------------------------------------	------------------------------------------	--------------------------

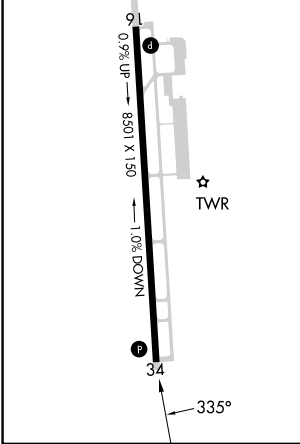


SW-4, 20 MAR 2025 to 17 APR 2025

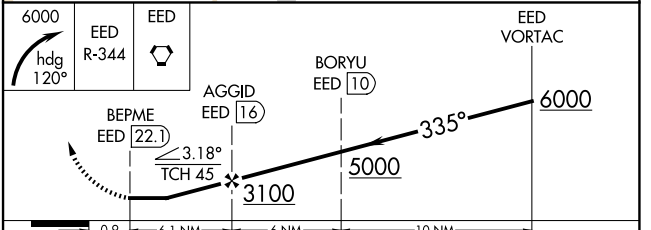
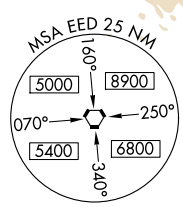
SW-4, 20 MAR 2025 to 17 APR 2025

ELEV 707	D TDZE 707
----------	-------------------

MIRL Rwy 16-34 **0**
REIL Rws 16 and 34 **0**



IAF
NEEDLES
115.2 EED
Chan 99



CATEGORY	A	B	C	D
S-34	2840-1¼ 2133 (2200-1¼)	2840-1½ 2133 (2200-1½)	2840-3	2133 (2200-3)
C CIRCLING	2840-1¼ 2133 (2200-1¼)	2840-1½ 2133 (2200-1½)	2840-3	2133 (2200-3)