

HUGO, OKLAHOMA

AL-6979 (FAA)

19339

WAAS CH 50437 W17A	APP CRS 178°	Rwy Idg TDZE Apt Elev	4007 570 572
----------------------------------------	------------------------	-----------------------------	-----------------------------------------

RNAV (GPS) RWY 17

STAN STAMPER MUNI (HHW)

RNP APCH.

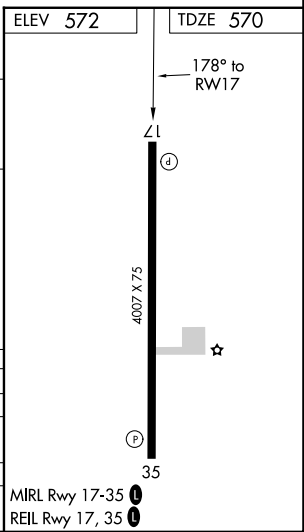
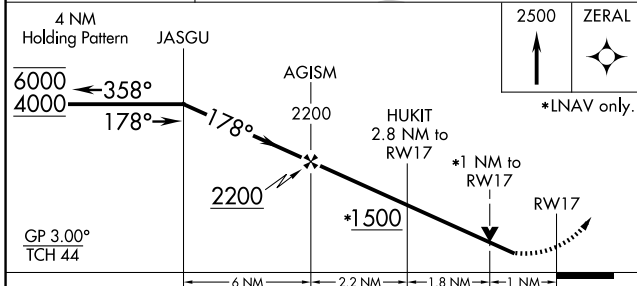
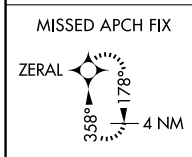
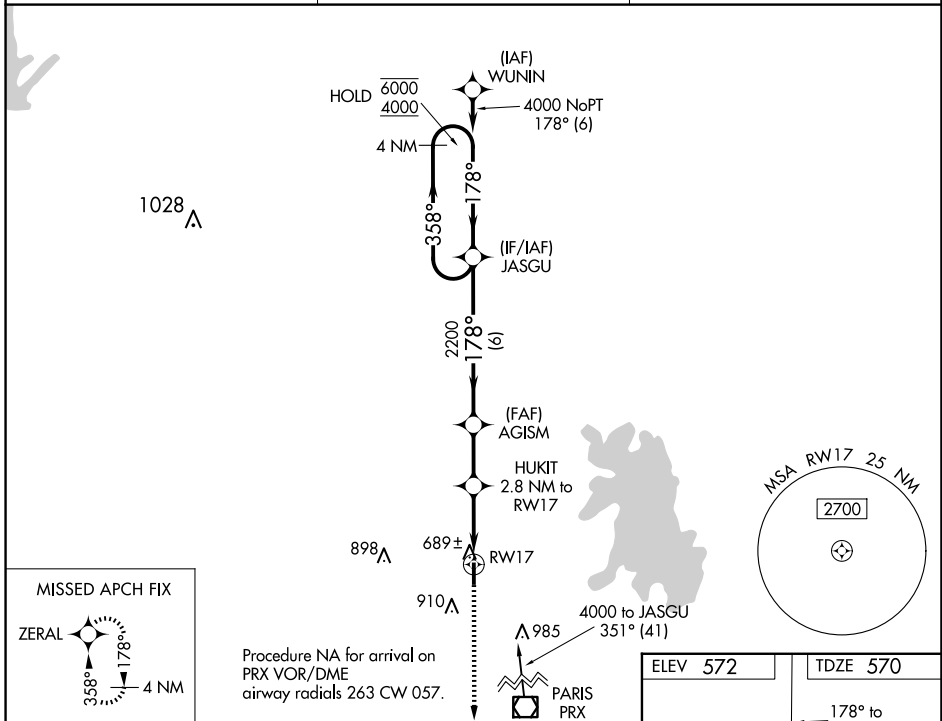
▼ Circling Rwy 35 NA at night. Rwy 17 helicopter visibility reduction below 3/4 SM NA.
▲ For uncompensated Baro-VNAV systems, LNAV/VNAV NA below -16°C or above 54°C.

MISSED APPROACH: Climb to 2500 direct ZERAL and hold.

AWOS-3
119.025

FORT WORTH CENTER
127.6 307.2

UNICOM
122.8 (CTAF) ①



CATEGORY	A	B	C	D
LPV DA		820-1	250 (300-1)	
LNAV/VNAV DA		870-1	300 (300-1)	
LNAV MDA		940-1	370 (400-1)	
C CIRCLING	1220-1	648 (700-1)	1340-2 1/4 768 (800-2 1/4)	1340-2 1/2 768 (800-2 1/2)

MIRL Rwy 17-35 ①
REIL Rwy 17, 35 ①

HUGO, OKLAHOMA
Amdt 1A 05DEC19

34°02'N-95°33'W

STAN STAMPER MUNI (HHW)

RNAV (GPS) RWY 17

SC-1, 20 MAR 2025 to 17 APR 2025

SC-1, 20 MAR 2025 to 17 APR 2025