

APP CRS 281°	Rwy Idg 3705
	TDZE 686
	Apt Elev 686

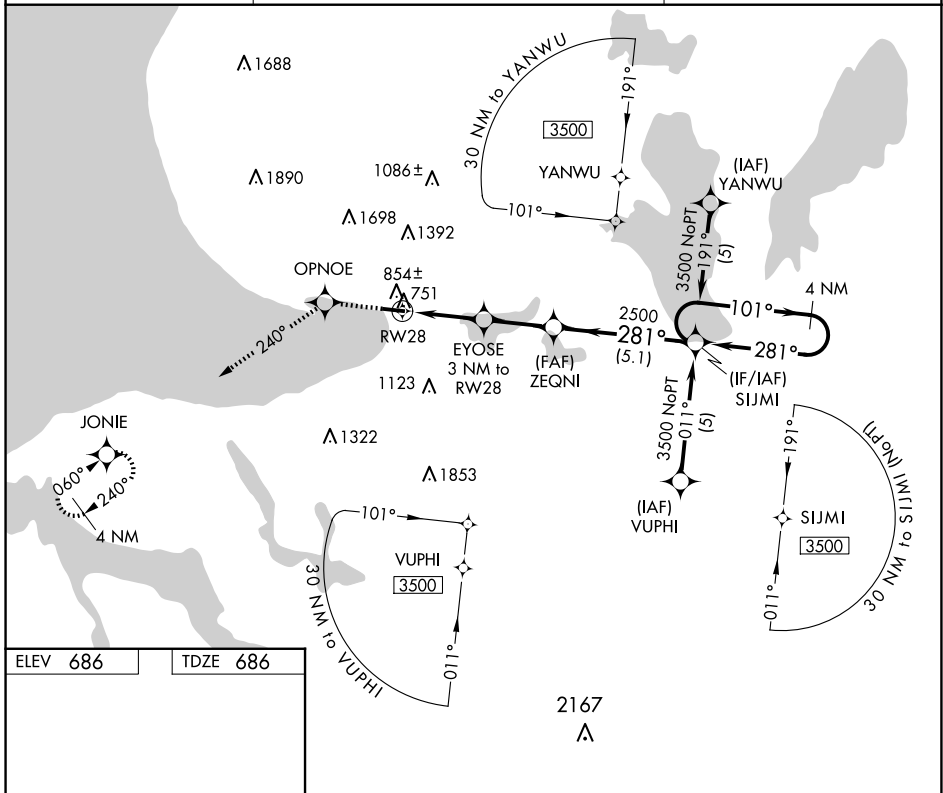
RNAV (GPS) RWY 28

HARBOR SPRINGS (MGN)

⚠ DME/DME RNP-0.3 NA. Helicopter visibility reduction below 1 SM NA. When local altimeter setting not received, use Pellsion altimeter setting and increase all MDAs 40 feet. Procedure NA at night.

MISSED APPROACH: Climb to 3400 direct OPNOE and via 240° track to JONIE and hold.

AWOS-3P 119.925	MINNEAPOLIS CENTER 134.6 354.05	UNICOM 122.8 (CTAF) 0
---------------------------	---	---------------------------------



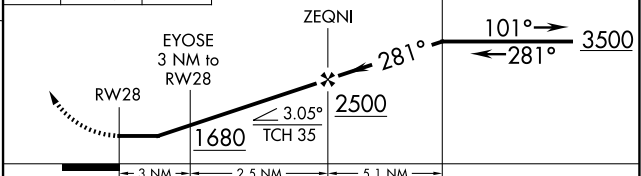
EC-1, 20 MAR 2025 to 17 APR 2025

EC-1, 20 MAR 2025 to 17 APR 2025

ELEV 686	TDZE 686
----------	----------



3400 OPNOE JONIE VGSI and descent angles not coincident (VGSI Angle 4.00/TCH 35).
 ↑ fr 240°
 4 NM Holding Pattern



CATEGORY	A	B	C	D
LNAV MDA	1120-1	434 (500-1)	NA	
CIRCLING	1380-1 694 (700-1)	1500-1¼ 814 (900-1¼)	NA	