

APP CRS 322°	Rwy Idg 3498
	TDZE 1610
	Apt Elev 1610

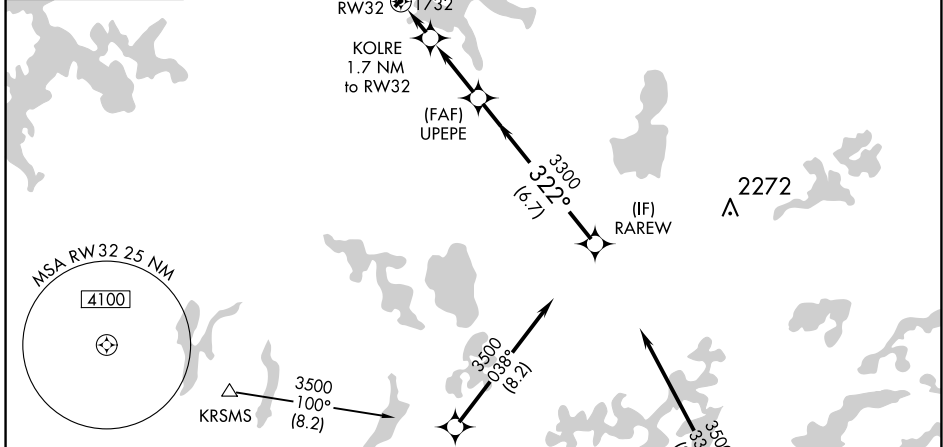
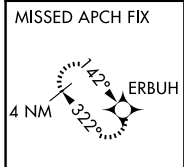
RNAV (GPS) RWY 32

MANITOWISH WATERS (D25)

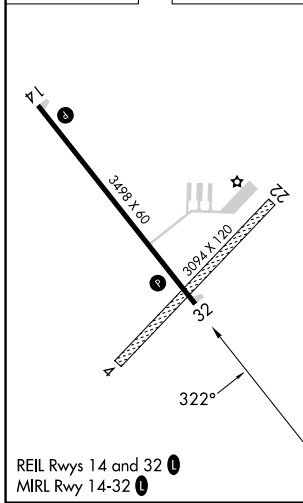
⚠ Circling NA to Rws 4 and 22. DME/DME RNP-0.3 NA. Procedure NA at night. Rwy 32 helicopter visibility reduction below 1 SM NA. When local altimeter setting not received, use Minocqua-Woodruff altimeter setting and increase all MDA 40 feet and LNAV Cat C visibility 1/8 mile and Circling Cat C visibility 1/4 mile.

MISSED APPROACH:
Climb to 3500 direct ERBUH and hold.

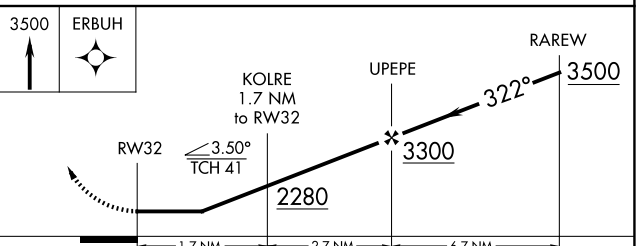
AWOS-3PT 118.175	MINNEAPOLIS CENTER 133.65 281.5	UNICOM 122.8 (CTAF) 📻
-----------------------------------	--	---



ELEV 1610	TDZE 1610
-----------	-----------



Procedure NA for arrival on RHI VOR/DME airway radials 241 CW 021.



CATEGORY	A	B	C	D
LNAV MDA	2000-1	390 (400-1)	2000-1 1/8 390 (400-1 1/8)	NA
📻 CIRCLING	2060-1	450 (500-1)	2340-2 730 (800-2)	NA

EC-3, 20 MAR 2025 to 17 APR 2025

EC-3, 20 MAR 2025 to 17 APR 2025