

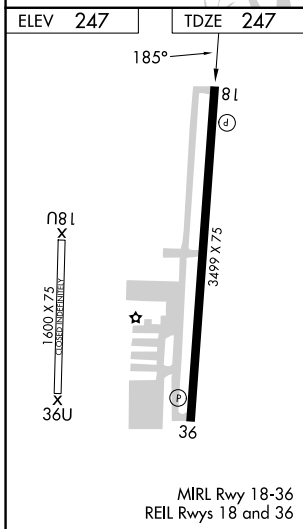
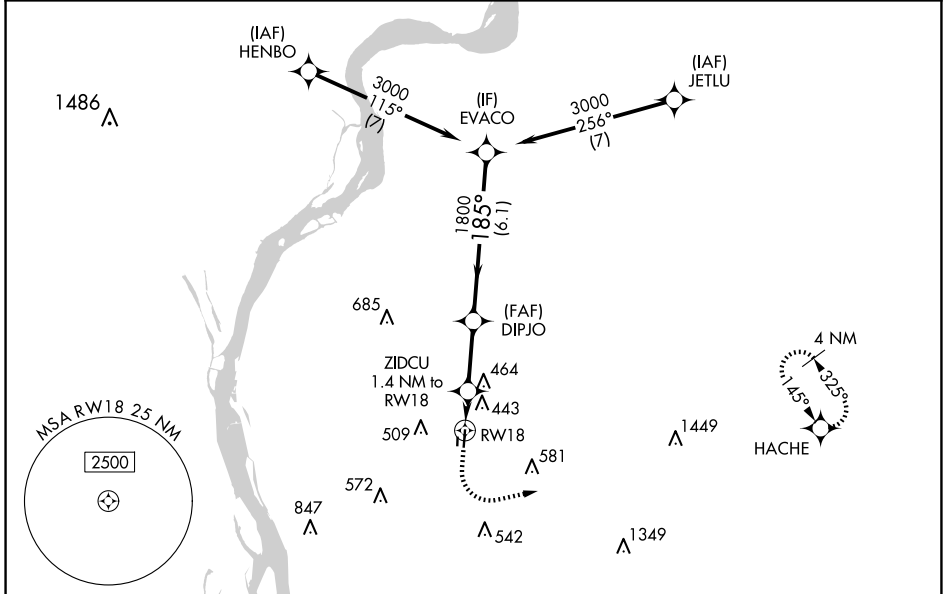
APP CRS	Rwy Idg	3499
185°	TDZE	247
	Apt Elev	247

RNAV (GPS) RWY 18

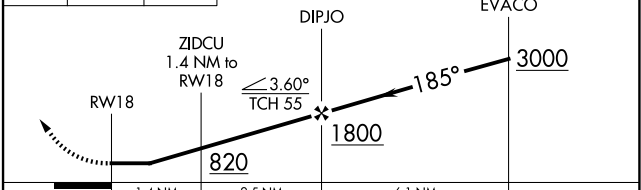
CHARLES W BAKER (2M8)

RNP APCH - GPS.		MISSED APPROACH: Climb to 1200 then climbing left turn to 3000 direct HACHE and hold.
▼	Rwy 18 helicopter visibility reduction below 1 SM NA. When local altimeter setting not received, use Millington/Memphis altimeter setting and increase all MDA 40 feet; and LNAV Cat C visibility 1/8 SM and Circling Cat C visibility 1/4 SM. Straight-in Rwy 18 NA at night, Circling Rwy 18 NA at night.	

AWOS-3PT 119.575	MEMPHIS APP CON 125.8 338.3	UNICOM 122.8 (CTAF)
----------------------------	---------------------------------------	-------------------------------



1200 3000 HACHE VGSI and RNAV glidepath not coincident (VGSI Angle 4.00/TCH 40).



	1.4 NM	2.5 NM	6.1 NM	
CATEGORY	A	B	C	D
LNAV MDA	780-1	533 (600-1)	780-1½ 533 (600-1½)	NA
☑ CIRCLING	780-1 533 (600-1)	860-1 613 (700-1)	900-1¾ 653 (700-1¾)	NA

SE-1, 20 MAR 2025 to 17 APR 2025

SE-1, 20 MAR 2025 to 17 APR 2025