

LOC/DME I-GAO <b>109.1</b> Chan 28	APP CRS <b>359°</b>	Rwy ldg <b>6500</b> TDZE <b>-2</b> Apt Elev <b>0</b>
------------------------------------------	------------------------	------------------------------------------------------------

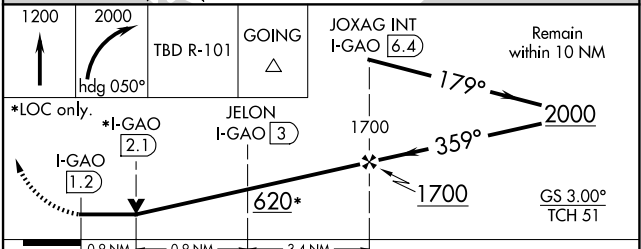
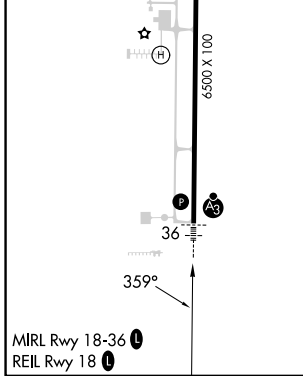
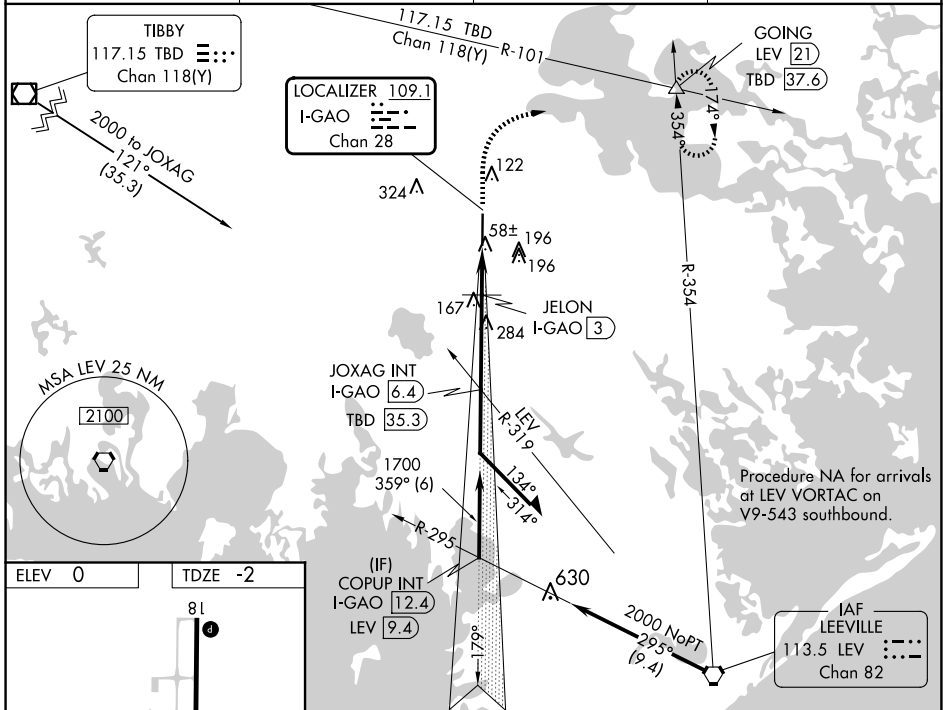
# ILS or LOC RWY 36

SOUTH LAFOURCHE LEONARD MILLER JR (GAO)

DME required.

MISSED APPROACH: Climb to 1200, then climbing right turn to 2000 on heading 050° and TBD VOR/DME R-101 to GOING INT/LEV 21 DME and hold.

AWOS-3PT <b>118.175</b>	NEW ORLEANS APP CON <b>120.85 256.9</b>	CLNC DEL <b>120.85</b>	UNICOM <b>123.0 (CTAF) 0</b>
----------------------------	--------------------------------------------	---------------------------	---------------------------------



CATEGORY	A	B	C	D
S-ILS 36		198-1/2	200 (200-1/2)	
S-LOC 36		320-1/2	322 (400-1/2)	
<b>C</b> CIRCLING	440-1 440 (500-1)	560-1 560 (600-1)	640-1 3/4 640 (700-1 3/4)	640-2 640 (700-2)

SC-4, 20 MAR 2025 to 17 APR 2025

SC-4, 20 MAR 2025 to 17 APR 2025