

APP CRS	Rwy Idg	5101
076°	TDZE	3305
	Apt Elev	3313

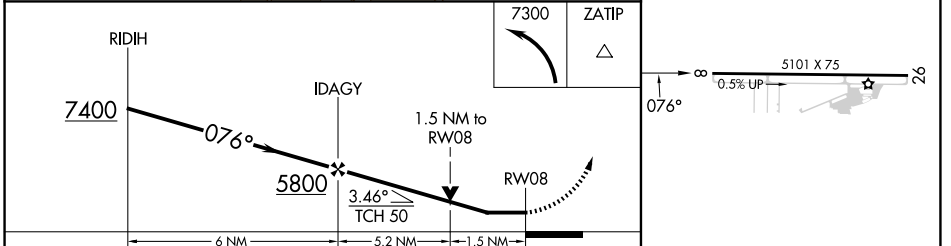
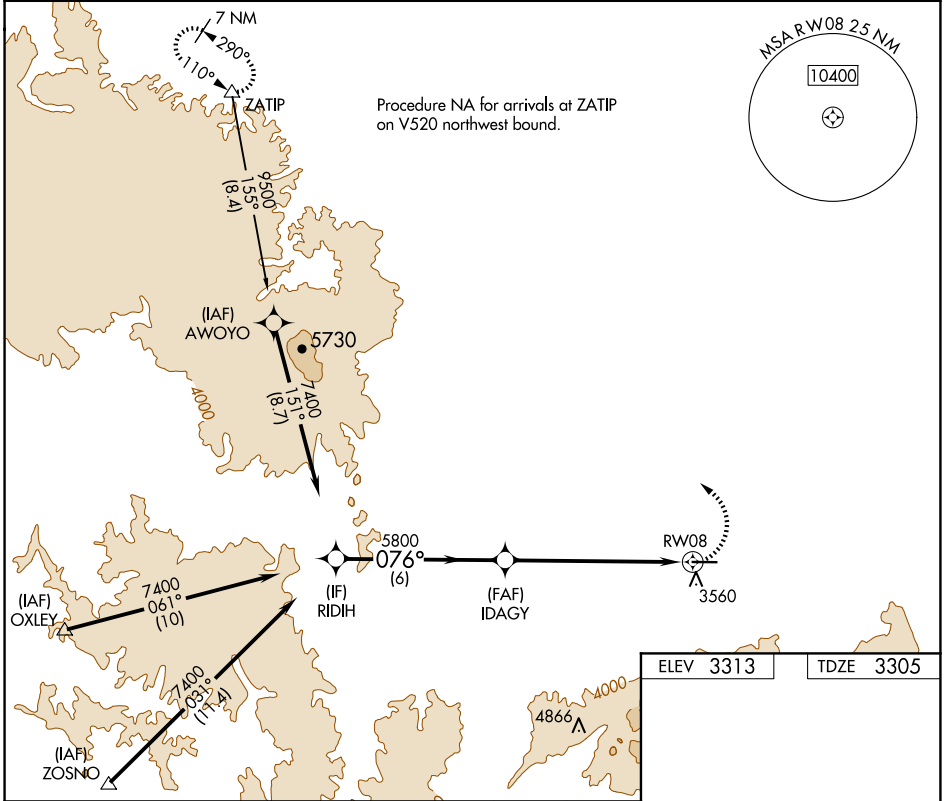
RNAV (GPS) RWY 8

IDAHO COUNTY (GIC)

⚠ Circling NA south of Rwy 8-26. Rwy 8 Helicopter visibility reduction below 3/4 SM NA. DME/DME RNP-0.3 NA.

⚠ MISSED APPROACH: Climbing left turn to 7300 direct ZATIP and hold.

AWOS-3 118.175	SEATTLE CENTER 123.95 290.55	CTAF 122.8
--------------------------	--	----------------------



CATEGORY	A	B	C	D	
LNNAV MDA	3900-1	595 (600-1)	3900-1 3/4	595 (600-1 3/4)	
C CIRCLING	3900-1	587 (600-1)	3900-1 3/4 587 (600-1 3/4)	3900-2 587 (600-2)	MIRL Rwy 8-26 ⚠ REIL Rwy 8 ⚠

NW-1, 20 MAR 2025 to 17 APR 2025

NW-1, 20 MAR 2025 to 17 APR 2025