

| | | |
|--|------------------------|---|
| WAAS CH 60939 W04A | APP CRS 045° | Rwy Idg 5002 TDZE 112 Apt Elev 112 |
|--|------------------------|---|

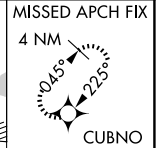
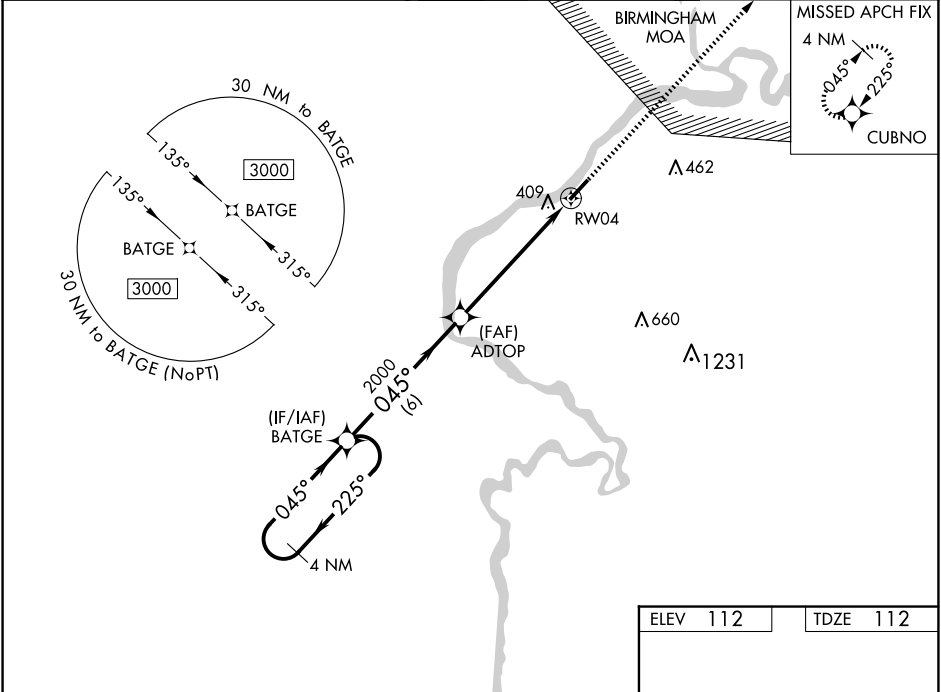
RNAV (GPS) RWY 4

DEMOPOLIS RGNL (DYA)

⚠ For uncompensated Baro-VNAV systems, LNAV/VNAV NA below -15°C (5°F) or above 54°C (130°F).
⚠ DME/DME RNP-0.3 NA. When local altimeter setting not received, use Marion altimeter setting and increase LPV and LNAV/VNAV DA 82 feet and all MDA 100 feet; increase LPV and LNAV/VNAV all Cats visibility 3/8 mile, increase LNAV Cats C/D and Circling Cat C visibility 1/4 mile, and increase Circling Cat D visibility 1/2 mile. Baro-VNAV and VDP NA when using Marion altimeter setting. Helicopter visibility reduction below 3/4 SM NA.

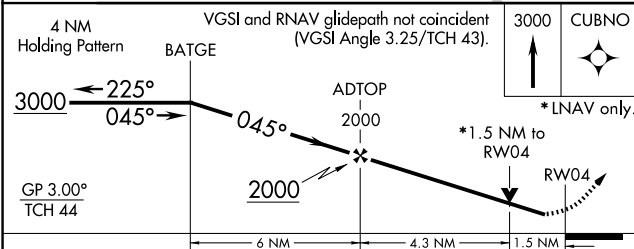
MISSED APPROACH:
Climb to 3000 direct CUBNO and hold.

| | | |
|---------------------------|---|---------------------------------|
| AWOS-3P 119.475 | MERIDIAN APP CON* 121.275 348.7 | UNICOM 122.8 (CTAF) 0 |
|---------------------------|---|---------------------------------|

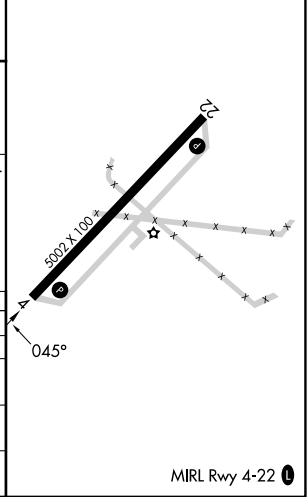


SE-4, 20 MAR 2025 to 17 APR 2025

SE-4, 20 MAR 2025 to 17 APR 2025



| | |
|----------|----------|
| ELEV 112 | TDZE 112 |
|----------|----------|



| CATEGORY | A | B | C | D |
|-------------------|-------|-------------|------------------------------|----------------------|
| LPV DA | | 362-3/4 | 250 (300-3/4) | |
| LNAV/VNAV DA | | 570-1 1/2 | 458 (500-1 1/2) | |
| LNAV MDA | 660-1 | 548 (600-1) | 660-1 1/2 | 548 (600-1 1/2) |
| C CIRCLING | 720-1 | 608 (700-1) | 720-1 3/4 608 (700-1 3/4) | 780-2 668 (700-2) |

MIRL Rwy 4-22 0