

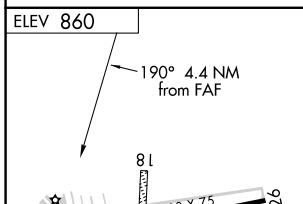
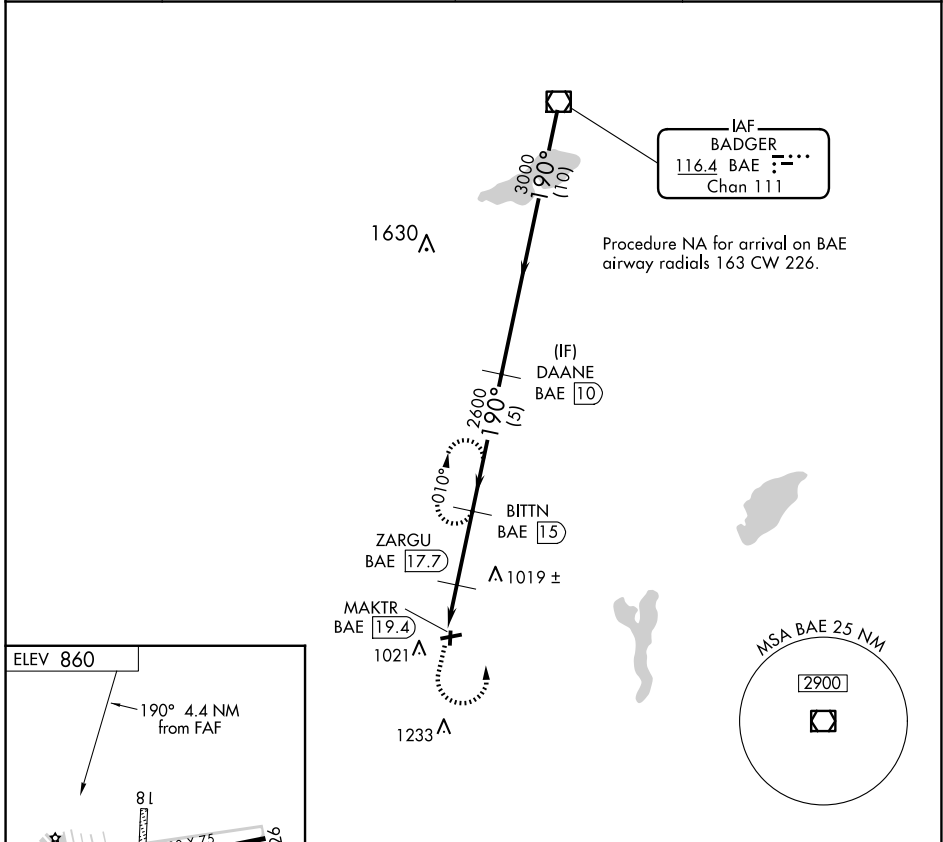
VOR/DME BAE 116.4 Chan 111	APP CRS 190°	Rwy Idg TDZE Apt Elev	N/A N/A 860
--	------------------------	-----------------------------	--

VOR/DME-A

EAST TROY MUNI (57C)

Circling NA to Rwys 18 and 36.	MISSED APPROACH: Climb to 2700 then left turn on BAE VOR/DME R-190 to BITTN/15 DME and hold.
--------------------------------	--

AWOS-3PT 118.125	MILWAUKEE APP CON 125.35 307.0	GCO 121.725	UNICOM 123.0 (CTAF)
----------------------------	--	-----------------------	-------------------------------



2700	BAE R-190	BITTN BAE 15	DAANE BAE 10	BAE VOR/DME
	ZARGU BAE 17.7	BITTN BAE 15	3000	3000
	MAKTR BAE 19.4	2600	190°	
	1800	1.7 NM	2.7 NM	5 NM
CATEGORY	A	B	C	D
CIRCLING	1340-1	480 (500-1)	NA	

MIRL Rwy 8-26
REIL Rws 8 and 26

EC-3, 20 MAR 2025 to 17 APR 2025

EC-3, 20 MAR 2025 to 17 APR 2025