

RNAV (GPS) RWY 34

BAKERSFIELD MUNI (L45)

APP CRS 341°	Rwy Idg TDZE Apt Elev	4000 377 378
------------------------	-----------------------------	---

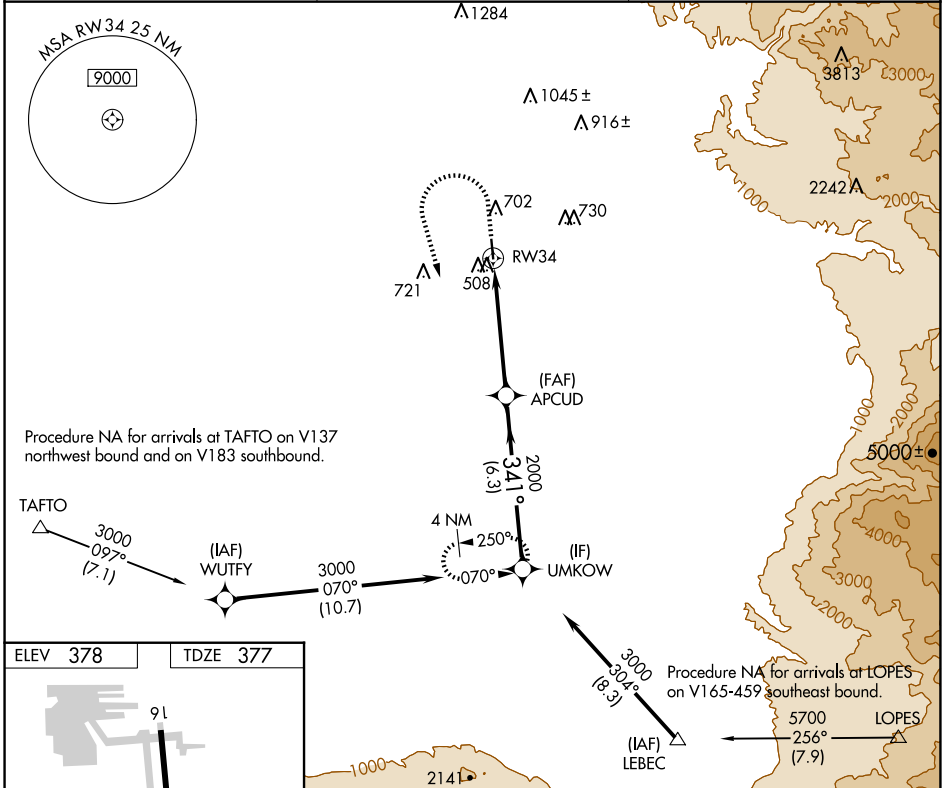
NA DME/DME RNP-0.3 NA. Use Meadows Fld altimeter setting. When Meadows Fld altimeter setting not received, use Porterville altimeter setting and increase all MDA 80 feet, increase LNAV and Circling Cat C and D visibility ¼ mile. Helicopter visibility reduction below ¾ SM NA. Night Landing Rwy 16 NA.

MISSED APPROACH: Climb to 1200 then climbing left turn to 3000 direct UMKOW and hold.

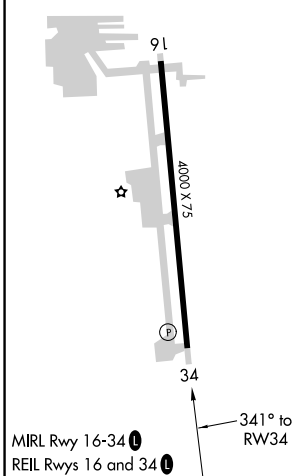
BFL ASOS
118.6

BAKERSFIELD APP CON *
126.45 270.3

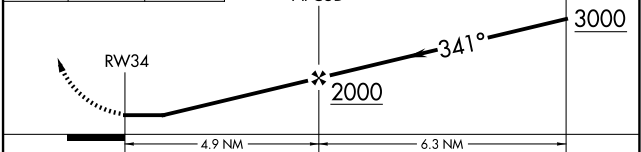
UNICOM
122.8 (CTAF) 0



ELEV 378 TDZE 377



1200	3000	UMKOW	Visual Segment - Obstacles.	UMKOW
------	------	-------	-----------------------------	-------



CATEGORY	A	B	C	D
LNAV MDA	840-1	463 (500-1)	840-1 3/8	463 (500-1 3/8)
C CIRCLING	1060-1	682 (700-1)	1120-2 1/4 742 (800-2 1/4)	1120-2 1/2 742 (800-2 1/2)

SW-3, 20 MAR 2025 to 17 APR 2025

SW-3, 20 MAR 2025 to 17 APR 2025