

(PONTI.NASCR1) 25051

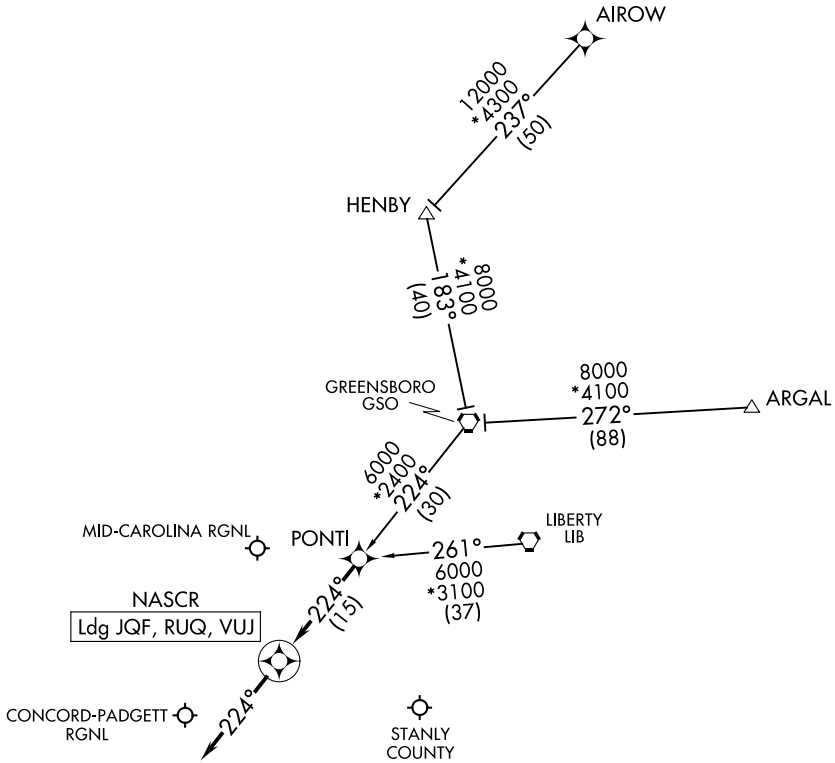
AL-9155 (FAA)

NASCR ONE ARRIVAL (RNAV)

CONCORD, NORTH CAROLINA

CHARLOTTE APP CON
128.325
JQF ATIS
133.675

RNAV 1 - DME/DME/IRU or GPS.
RADAR required.



SE-2, 20 MAR 2025 to 17 APR 2025

SE-2, 20 MAR 2025 to 17 APR 2025

NOTE: Chart not to scale.

ARRIVAL ROUTE DESCRIPTION

- AIROW TRANSITION (AIROW.NASCR1)
- ARGAL TRANSITION (ARGAL.NASCR1)
- GREENSBORO TRANSITION (GSO.NASCR1)
- LIBERTY TRANSITION (LIB.NASCR1)

LANDING ALL AIRPORTS: From PONTI on track 224° to NASCR, then on track 224°. Expect RADAR vectors to final approach course.

NASCR ONE ARRIVAL (RNAV)
(PONTI.NASCR1) 20FEB25

CONCORD, NORTH CAROLINA