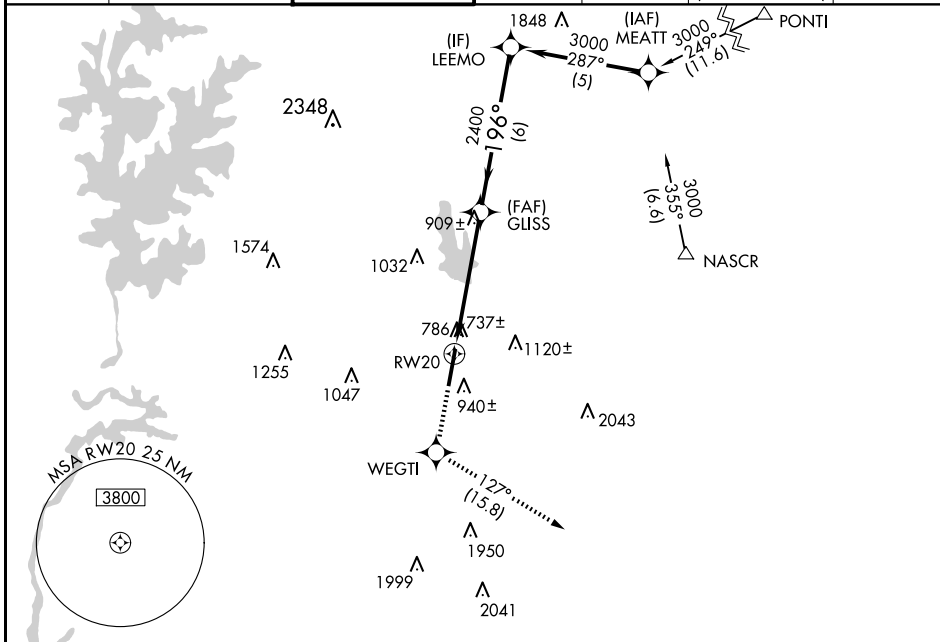


WAAS CH 56499 W20A	APP CRS 196°	Rwy Idg TDZE Apt Elev	6350 699 704
--	------------------------	-----------------------------	---

RNAV (GPS) RWY 20

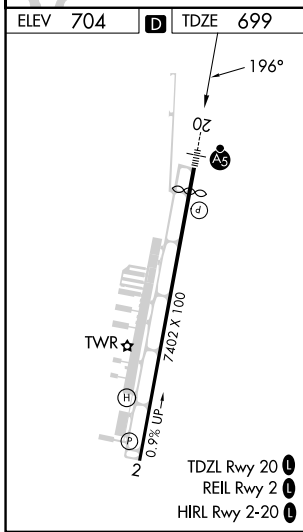
CONCORD-PADGETT RGNL (JQF)

RNP APCH-GPS.				MALSR	MISSED APPROACH: Climb to 3000 direct WEGTI and on track 127° to LOCAS and hold.	
⚠ For uncompensated Baro-VNAV systems, LNAV/VNAV NA below -16°C or above 54°C. For inop ALS, increase LNAV/VNAV visibility all Cats to 1½ SM. Rwy 20 helicopter visibility reduction below ¾ SM NA.						
ATIS 133.675	CHARLOTTE APP CON 128.325 307.8	CONCORD TOWER * 134.65 (CTAF)	GND CON 121.85	CLNC DEL 118.55	CLNC DEL 127.25 (when twr closed)	UNICOM 122.95



SE-2, 20 MAR 2025 to 17 APR 2025

SE-2, 20 MAR 2025 to 17 APR 2025



ELEV 704	D	TDZE 699	LOCAS 093° 4 NM 273°			
3000	WEGTI	LOCAS	LEEMO			
↑	✦	tr 127°	3000			
*LNAV only.			GLISS			
RW20		*1.8 NM to RW20	2400	196°	3000	
			2400		GP 3.00° TCH 44	
		1.8 NM	3.3 NM	6 NM		
CATEGORY	A	B	C	D		
LPV DA	1026-¾		327 (400-¾)			
LNAV/VNAV DA	1222-1¼		523 (600-1¼)			
LNAV MDA	1300-¾	601 (600-¾)		1300-1⅜	601 (600-1⅜)	
CIRCLING	1300-1	596 (600-1)		1480-2¼	1480-2½ 776 (800-2½)	