

WAAS CH 70512 W36A	APP CRS 357°	Rwy Idg 5500 TDZE 891 Apt Elev 910
--	------------------------	---

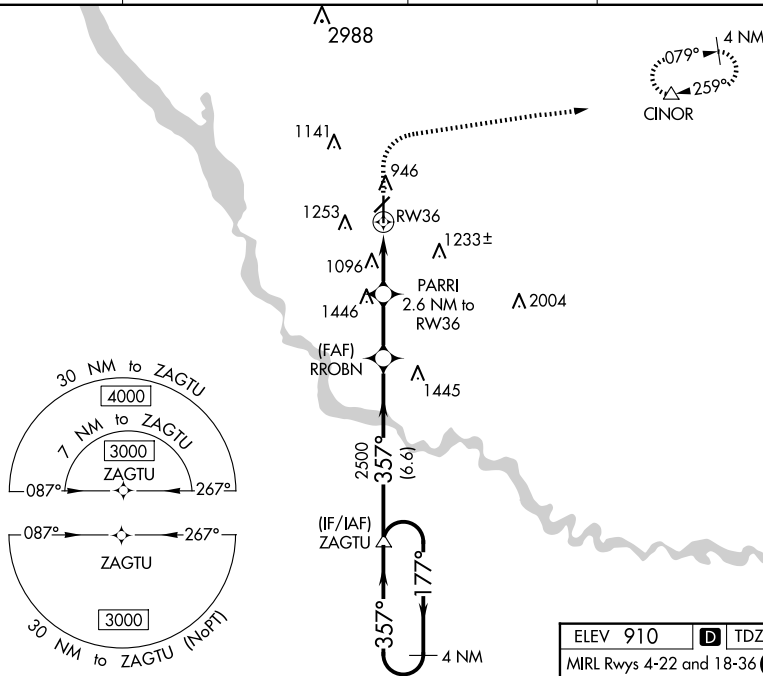
RNAV (GPS) RWY 36

ANKENY RGNL (IKV)

▽
▲ For uncompensated Baro-VNAV systems,
LNAV/VNAV NA below -20°C (-4°F) or above 54°C (130°F).
Circling Rwy 22 NA at night. DME/DME RNP-0.3 NA.

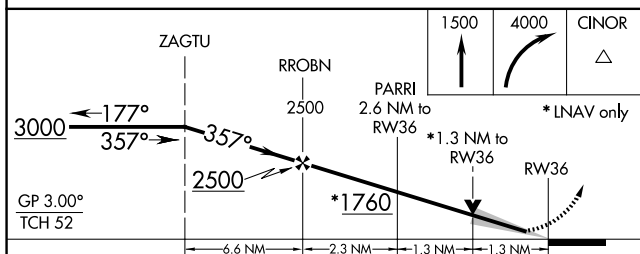
MISSED APPROACH: Climb to 1500 then climbing right turn to 4000 direct CINOR and hold, continue climb-in-hold to 4000.

AWOS-3 119.175	DES MOINES APP CON 123.9 307.15	CLNC DEL 126.65	UNICOM 122.9 (CTAF) ①
--------------------------	---	---------------------------	---------------------------------



NC-3, 20 MAR 2025 to 17 APR 2025

NC-3, 20 MAR 2025 to 17 APR 2025



ELEV 910	D TDZE 891
MRL Rwys 4-22 and 18-36 ①	
REIL Rwys 4, 18 and 36 ①	
REIL Rwy 22	

The diagram shows the runway layout. RWY 36 is 5500 x 100 feet long. RWY 8/18 is 4000 x 75 feet long. The diagram also shows the 357° heading to RWY 36 and the 0.3% up slope.

CATEGORY	A	B	C	D
LPV DA		1091-3/4	200 (200-3/4)	
LNAV/VNAV DA		1405-13/4	514 (500-13/4)	
LNAV MDA	1360-1	469 (500-1)	1360-13/8	469 (500-13/8)
C CIRCLING	1560-1	650 (700-1)	1560-13/4 650 (700-13/4)	1760-23/4 850 (900-23/4)