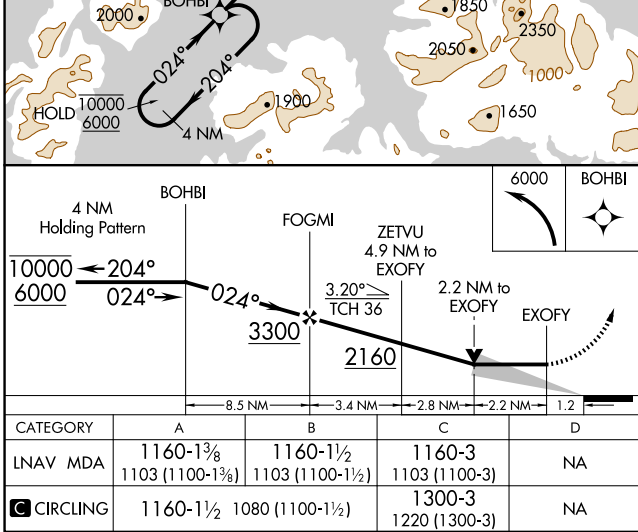
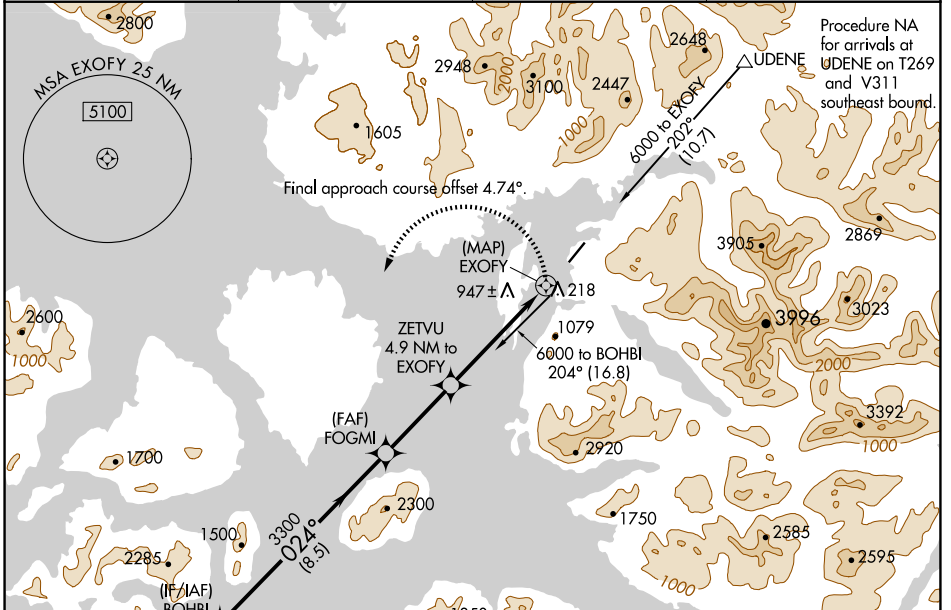


APP CRS	Rwy Idg	5000
024°	TDZE	57
	Apt Elev	80

RNAV (GPS) Y RWY 2

KLAWOCK (AKW) (PAKW)

RNP APCH-GPS.		MISSED APPROACH: (Do not exceed 165K until BOHBI) Climbing left turn to 6000 direct BOHBI and hold, continue climb-in-hold to 6000.	
Circling NA east of Rwy 2-20. Circling Rwy 20 NA at night. -9°C			
ASOS	ANCHORAGE CENTER	KETCHIKAN RADIO	CTAF
135.45	118.5 284.6	122.25	120.9



ELEV 80	TDZE 57			
CATEGORY A B C D				
LNVA MDA	1160-1 $\frac{3}{8}$ 1103 (1100-1 $\frac{3}{8}$)	1160-1 $\frac{1}{2}$ 1103 (1100-1 $\frac{1}{2}$)	1160-3 1103 (1100-3)	NA
CIRCLING	1160-1 $\frac{1}{2}$ 1080 (1100-1 $\frac{1}{2}$)		1300-3 1220 (1300-3)	NA

AK, 20 FEB 2025 to 17 APR 2025

AK, 20 FEB 2025 to 17 APR 2025