

# RNAV (GPS) RWY 11

STUART-ATKINSON MUNI (8V2)

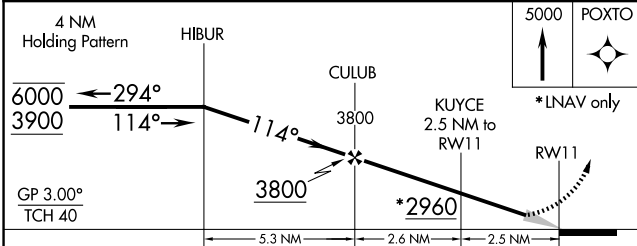
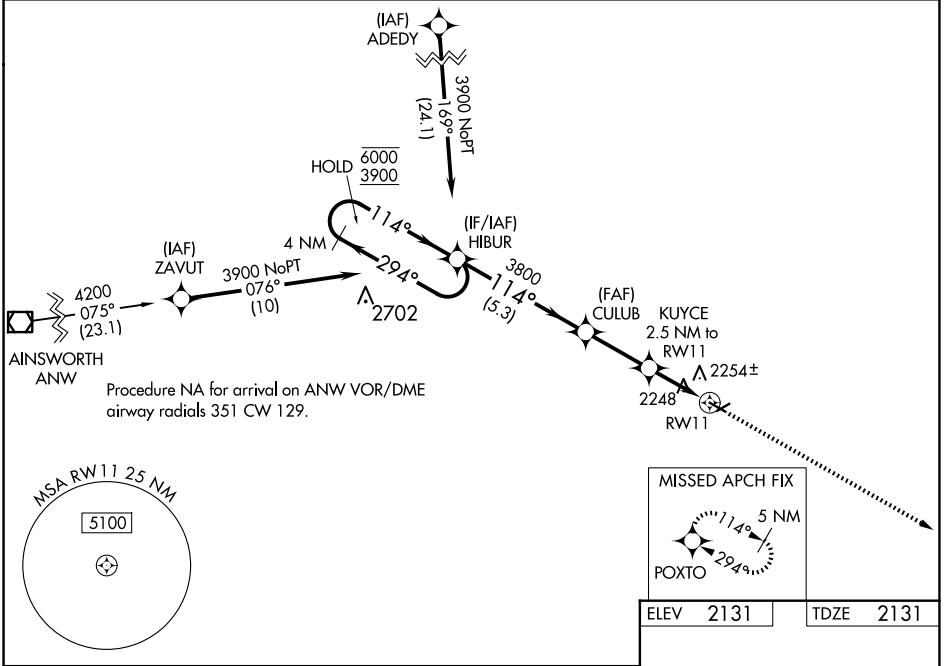
|  |                        |   |             |
|--|------------------------|---|-------------|
| WAAS<br>CH <b>69427</b><br><b>W11A</b> | APP CRS<br><b>114°</b> | Rwy Idg<br>TDZE <b>2131</b><br>Apt Elev <b>2131</b> | <b>3900</b> |
|--|------------------------|---|-------------|

**RNP APCH.**

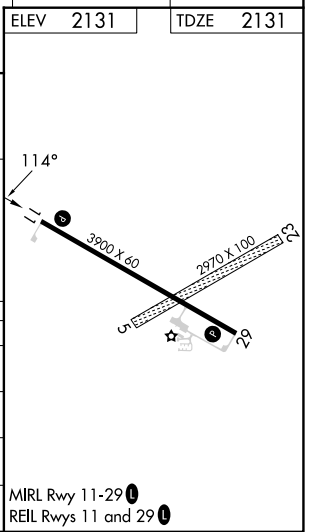
**NA** Circling NA to Rwy's 5 and 23. Baro-VNAV NA. Use O'Neill altimeter setting; when not received, use Ainsworth altimeter setting; increase LPV DA to 2547 feet and visibility all Cats to 1½ SM; increase LNAV/VNAV DA to 2691 feet and visibility all Cats to 1½ SM; increase all MDA 120 feet.

**MISSED APPROACH:** Climb to 5000 direct POXTO and hold, continue climb-in-hold to 5000.

|                              |   |                      |
|------------------------------|---|----------------------|
| ONL AWOS-3<br><b>121.125</b> | MINNEAPOLIS CENTER<br><b>128.0 257.95</b> | CTAF<br><b>122.9</b> |
|------------------------------|---|----------------------|



| CATEGORY     | A                     | B                     | C | D  |
|--------------|-----------------------|-----------------------|---|----|
| LPV DA       | 2433-1                | 302 (400-1)           |   | NA |
| LNAV/VNAV DA | 2577-1⅜               | 446 (500-1⅝)          |   | NA |
| LNAV MDA     | 2560-1                | 429 (500-1)           |   | NA |
| CIRCLING     | 2620-1<br>489 (500-1) | 2640-1<br>509 (600-1) |   | NA |



NC-2, 20 MAR 2025 to 17 APR 2025

NC-2, 20 MAR 2025 to 17 APR 2025