

# RNAV (GPS) Y RWY 9

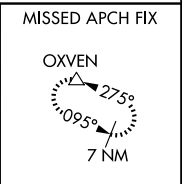
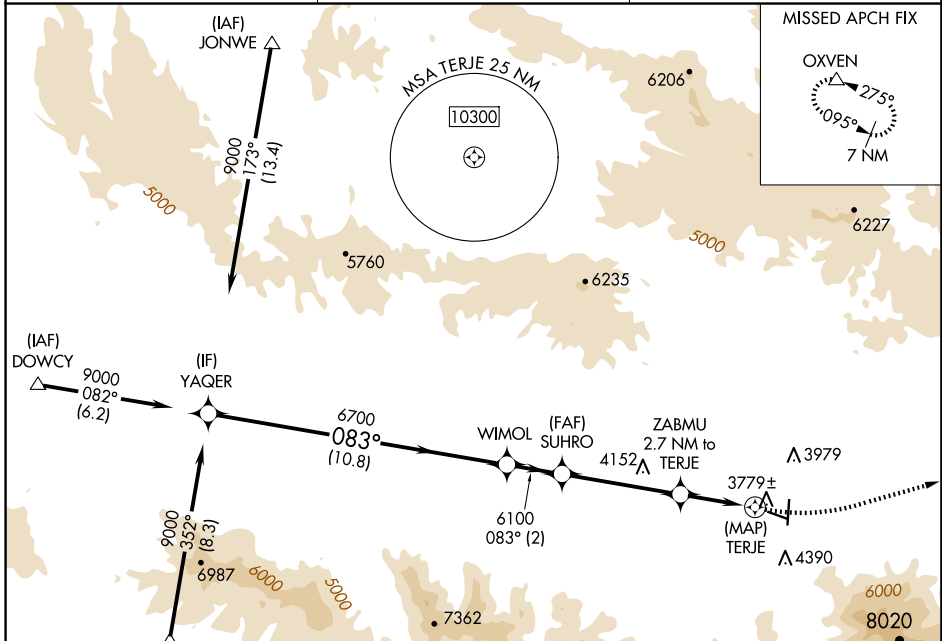
GRANT COUNTY RGNL/OGLIVIE FLD (GCD)

APP CRS <b>083°</b>	Rwy Idg <b>4100</b>
	TDZE <b>3669</b>
	Apt Elev <b>3703</b>

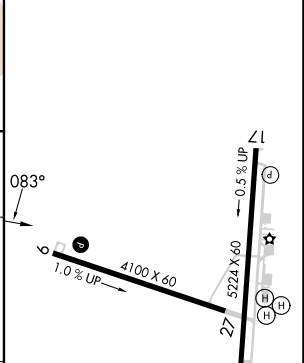
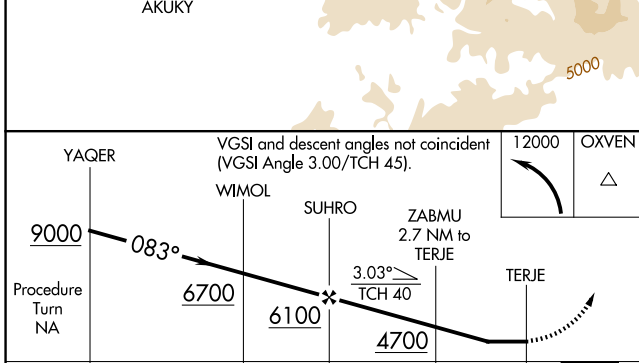
**▼** When local altimeter setting not received, procedure NA.  
**▲** Circling NA south of Rwy 9-27. DME/DME RNP-0.3 NA.  
 Helicopter visibility reduction below 3/4 SM not authorized.

**MISSED APPROACH:** Climbing left turn to 12000 direct OXVEN and hold, continue climb-in-hold to 12000.

AWOS-3 <b>118.375</b>	SEATTLE CENTER <b>128.15 257.75</b>	UNICOM <b>122.8 (CTAF) 0</b>
--------------------------	--	---------------------------------



ELEV 3703	TDZE 3669
-----------	-----------



CATEGORY	A	B	C	D
LNVA MDA	4280-1 611 (600-1)	4280-1 3/4 611 (600-1 3/4)	4280-1 3/4 611 (600-1 3/4)	NA
CIRCLING	4280-1 577 (600-1)	4520-1 1/4 817 (900-1 1/4)	5160-3 1457 (1500-3)	NA

REIL Rwy 17 and 9 **0**  
 MIRL Rwy 9-27 and 17-35 **0**

NW-1, 20 MAR 2025 to 17 APR 2025

NW-1, 20 MAR 2025 to 17 APR 2025