

VOR/DME MVE 111.6 Chan 53	APP CRS 328°	Rwy Idg 3715 TDZE 1045 Apt Elev 1048
---	------------------------	---

VOR/DME RWY 33

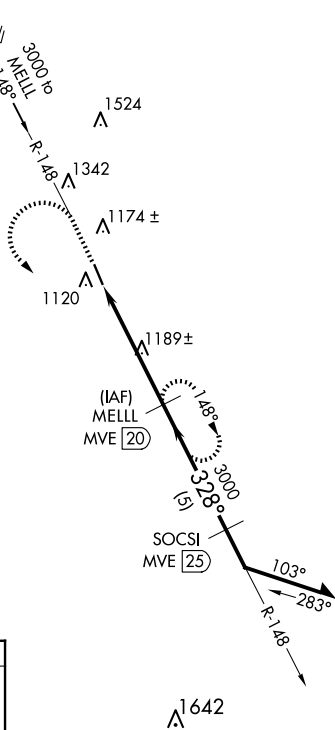
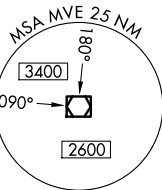
GRANITE FALLS MUNI/LENZEN-ROE-FAGEN MEML FLD (G'DB)

⚠ When local altimeter setting not received, use Montevideo altimeter setting and increase all MDAs 40 feet, increase S-33 visibility Cat C ½ SM. Rwy 33 helicopter visibility below ¾ SM NA.

MISSED APPROACH: Climb to 3000, then left turn via R-148 to MELL/MVE 20 DME and hold.

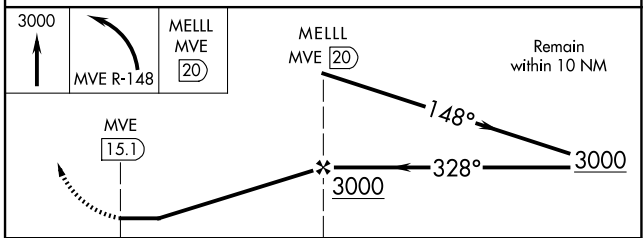
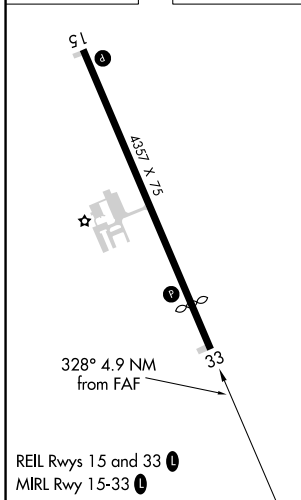
AWOS-3 120.1	MINNEAPOLIS CENTER 127.1 290.2	GCO 121.725	UNICOM 122.8 (CTAF)
------------------------	--	-----------------------	-------------------------------

MONTEVIDEO
111.6 MVE
Chan 53



IAF REDWOOD FALLS
113.3 RWF
Chan 80

ELEV 1048	TDZE 1045
-----------	-----------



CATEGORY	A	B	C	D
S-33	1480-1	435 (500-1)	1480-1¼ 435 (500-1¼)	1480-1½ 435 (500-1½)
CIRCLING	1540-1 492 (500-1)	1580-1 532 (600-1)	1580-1½ 532 (600-1½)	1700-2 652 (700-2)

VOR/DME RWY 33

NC-1, 20 MAR 2025 to 17 APR 2025

NC-1, 20 MAR 2025 to 17 APR 2025