

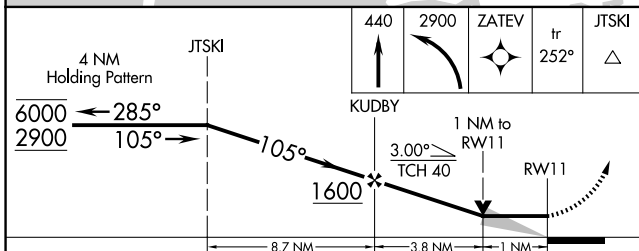
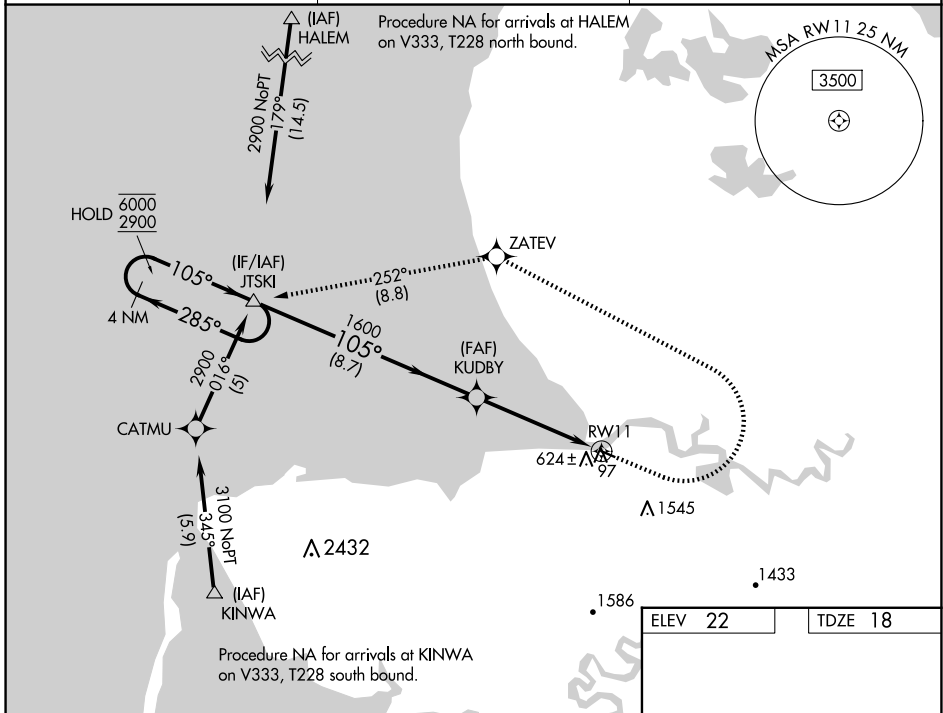
WAAS CH 77548 W11A	APP CRS 105°	Rwy Idg TDZE Apt Elev	3001 18 22
--	------------------------	-----------------------------	---------------------------------------

RNAV (GPS) RWY 11

SCAMMON BAY (SCM) (PACM)

RNP APCH - GPS.	<p>⚠ Circling NA south of Rwy 11-29. Circling Rwy 29 NA at night. VDP NA when using VAK/PAVA altimeter setting. When local altimeter setting not received, use VAK/PAVA altimeter setting and increase all MDAs 60 feet.</p> <p>❄ -20°C</p>	<p>MISSED APPROACH: Climb to 440, then climbing left turn to 2900 direct ZATEV then on track 252° to JTSKI and hold.</p>
-----------------	---	--

AWOS-3P 118.425	ANCHORAGE CENTER 124.5	UNICOM 123.0 (CTAF) 0
---------------------------	----------------------------------	---------------------------------



ELEV 22	TDZE 18
---------	---------

MRL Rwy 11-29 0

CATEGORY	A	B	C	D
LP MDA	380-1	362 (400-1)		NA
LNVA MDA	1100-1¼ 1082 (1100-1¼)	1100-1½ 1082 (1100-1½)		NA
CIRCLING	1100-1¼ 1078 (1100-1¼)	1100-1½ 1078 (1100-1½)		NA

AK, 20 FEB 2025 to 17 APR 2025

AK, 20 FEB 2025 to 17 APR 2025