

STIGLER, OKLAHOMA

AL-9467 (FAA)

24305

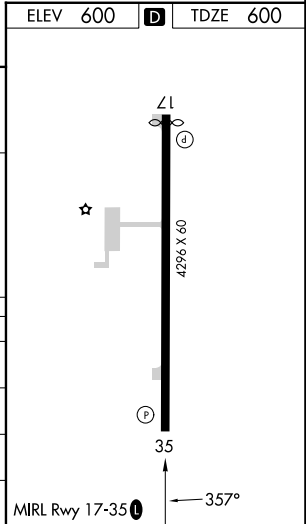
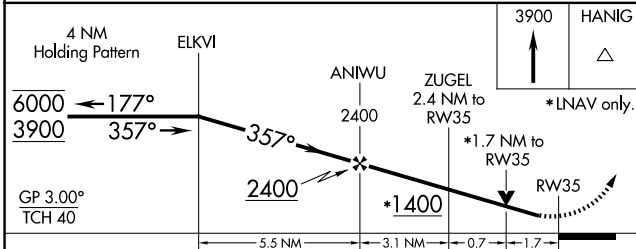
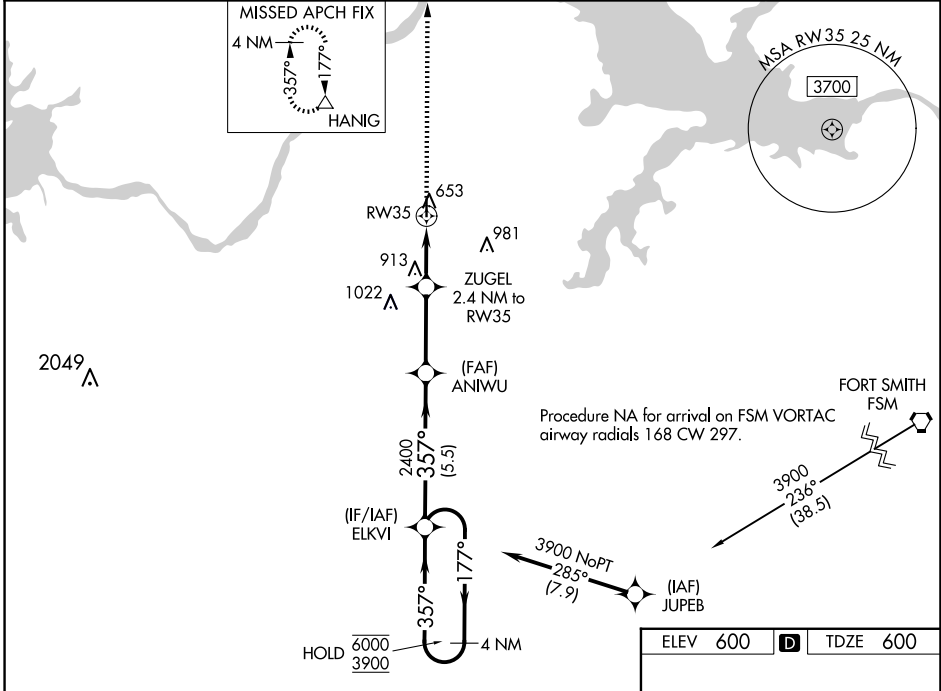
WAAS CH 82522 W35A	APP CRS 357°	Rwy Idg TDZE Apt Elev	4296 600 600
--	------------------------	-----------------------------	---

RNAV (GPS) RWY 35

STIGLER RGNL (GZL)

RNP APCH.	MISSED APPROACH: Climb to 3900 direct HANIG and hold.
<p>▼ Circling Rwy 17 NA at night. Rwy 35 helicopter visibility reduction below $\frac{3}{4}$ SM NA. For uncompensated Baro-VNAV systems, LNAV/VNAV NA below +16°C or above 54°C.</p>	

AWOS-3PT 118.575	FORT WORTH CENTER 132.2 338.35	CTAF 122.9
----------------------------	--	----------------------



CATEGORY	A	B	C	D
LPV DA	850-1	250 (300-1)		NA
LNAV/VNAV DA	867-1	267 (300-1)		NA
LNAV MDA	1180-1	580 (600-1)		NA
C CIRCLING	1180-1	580 (600-1)		NA

STIGLER, OKLAHOMA
Amdt 1D 05DEC19

35°17'N-95°06'W

RNAV (GPS) RWY 35

STIGLER RGNL (GZL)

SC-1, 20 MAR 2025 to 17 APR 2025

SC-1, 20 MAR 2025 to 17 APR 2025