

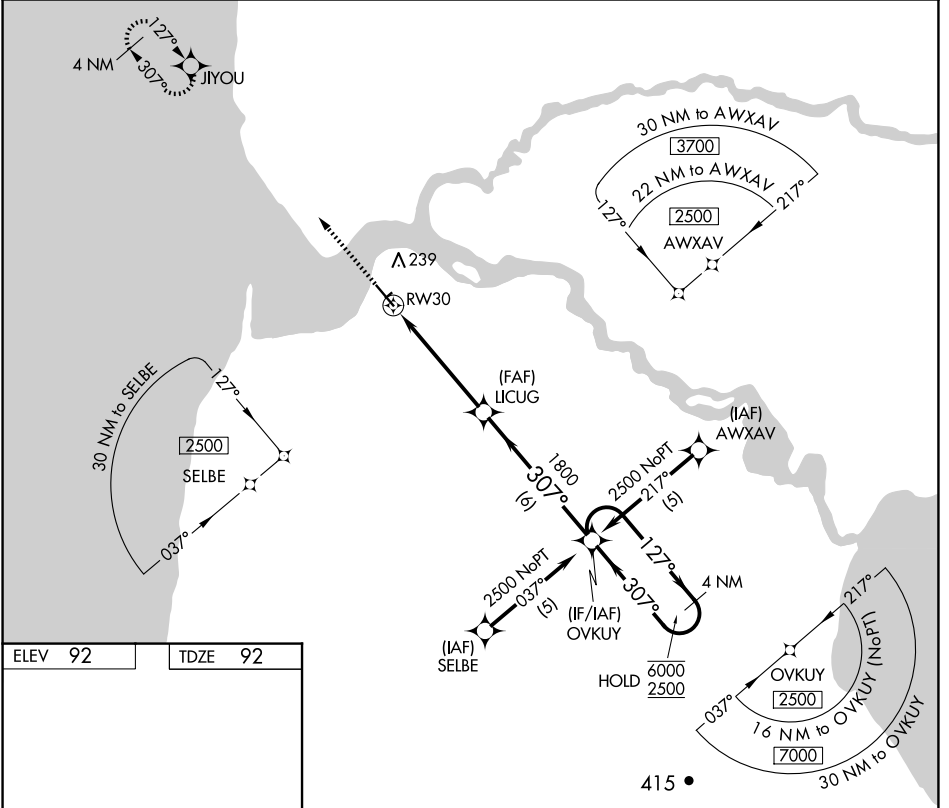
APP CRS	Rwy Idg	<b>5600</b>
<b>307°</b>	TDZE	<b>92</b>
	Apt Elev	<b>92</b>

# RNAV (GPS) RWY 30

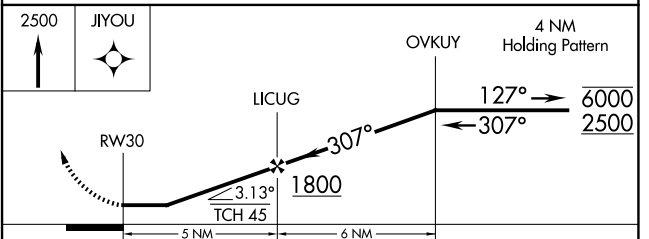
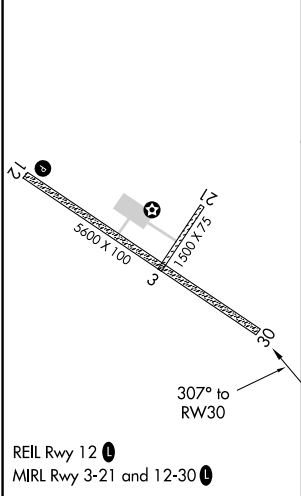
EGEGIK (EII) (PAII)

RNP APCH.	MISSED APPROACH: Climb to 2500 direct JIYOU and hold.
▼ Rwy 30 helicopter visibility reduction below 1 SM NA.	

AWOS-3P <b>135.65</b>	ANCHORAGE CENTER <b>124.8 354.0</b>	CTAF <b>122.8</b>
--------------------------	--	----------------------



ELEV 92	TDZE 92
---------	---------



CATEGORY	A	B	C	D
LNAV MDA	700-1	608 (700-1)	700-1¾ 608 (700-1¾)	NA
CIRCLING	800-1	708 (800-1)	800-2¼ 708 (800-2¼)	NA

AK, 20 FEB 2025 to 17 APR 2025

AK, 20 FEB 2025 to 17 APR 2025