

WAAS CH 72834 W19A	APP CRS 191°	Rwy Idg 5001 TDZE 221 Apt Elev 221
--	------------------------	---

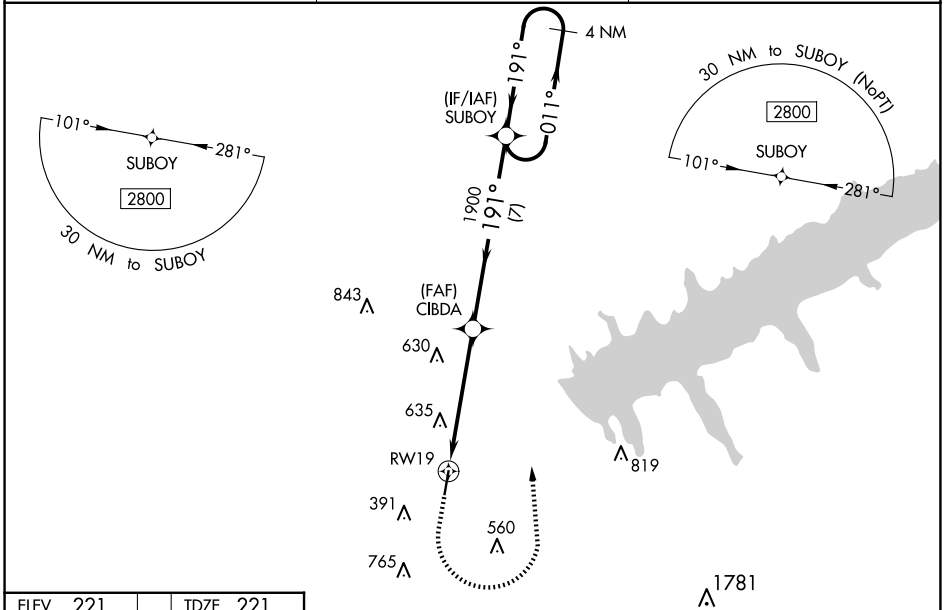
RNAV (GPS) RWY 19

PANOLA COUNTY (PMU)

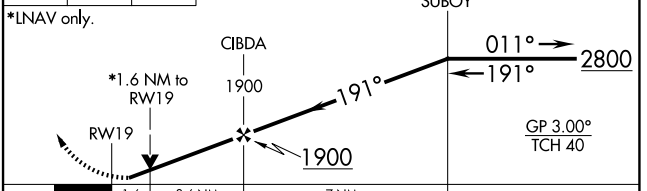
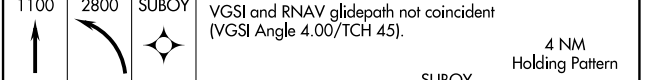
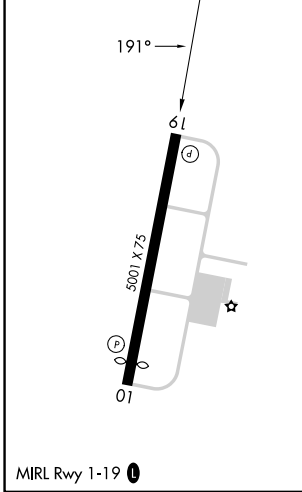
▼ For uncompensated Baro-VNAV systems, LNAV/VNAV NA below -15°C (5°F) or above 54°C (130°F).
▲ NA DME/DME RNP-0.3 NA. Baro-VNAV and VDP NA when using Oxford altimeter setting.
 When local altimeter setting not received, use Oxford altimeter setting and increase LPV DA to 571, LNAV/VNAV DA to 1116 and all MDA 80 feet, increase LPV all Cats visibility 3/8 mile, LNAV/VNAV all Cats visibility 1/2 mile, LNAV Cat B visibility 1/4 mile, LNAV Cats C, D visibility 1/2 mile, and Circling Cats B, C visibility 1/4 mile. Rwy 19 helicopter visibility reduction below 3/4 SM NA.

MISSED APPROACH:
 Climb to 1100 then climbing left turn to 2800 direct SUBOY and hold.

AWOS-3PT 118.225	MEMPHIS CENTER 128.5 279.55	UNICOM 122.8 (CTAF) 0
----------------------------	---------------------------------------	---------------------------------



ELEV 221	TDZE 221
-----------------	-----------------



CATEGORY	A	B	C	D
LPV DA		500-7/8	279 (300-7/8)	
LNAV/VNAV DA		1045-3	824 (900-3)	
LNAV MDA	940-1	719 (800-2)	940-2	719 (800-2)
C CIRCLING	940-1 719 (800-1)	1000-1 779 (800-1)	1000-2 1/4 779 (800-2 1/4)	1120-3 899 (900-3)

SC-4, 20 MAR 2025 to 17 APR 2025

SC-4, 20 MAR 2025 to 17 APR 2025