

WAAS CH 69409 W16A	APP CRS 162°	Rwy Idg 3248 TDZE 17 Apt Elev 17
--	------------------------	---

RNAV (GPS) RWY 16

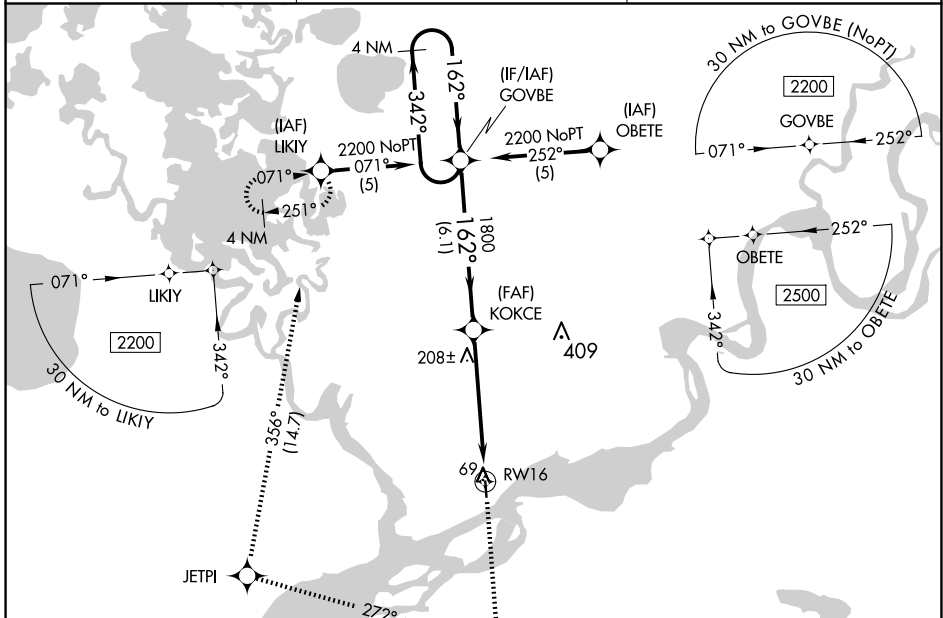
NAPAKIAK (WNA) (PANA)

V **A** **NA**
W

DME/DME RNP-0.3 NA. When local altimeter setting not received, use Bethel altimeter setting. Rwy 16 helicopter visibility reduction 1 SM NA. Procedure NA at night for Cat C and D aircraft.

MISSED APPROACH: Climb to 2200 direct CUGAV and right turn on track 272° to JETPI on track 356° to LIKIY and hold.

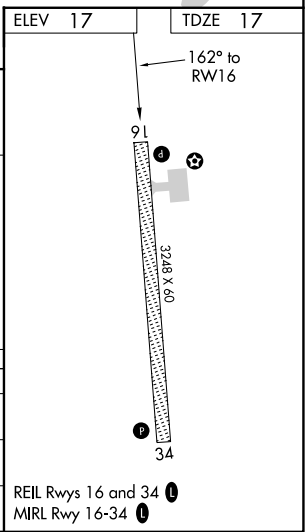
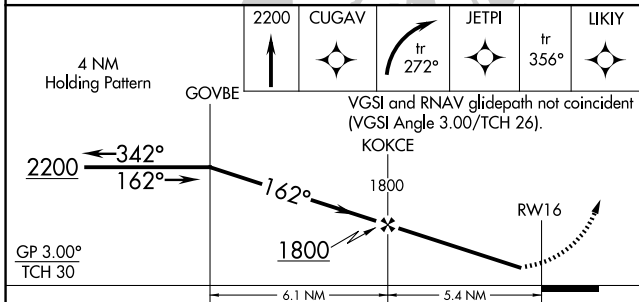
AWOS-3P 121.425	ANCHORAGE CENTER 125.2 372.0	CTAF 122.9
---------------------------	--	----------------------



AK, 20 FEB 2025 to 17 APR 2025

AK, 20 FEB 2025 to 17 APR 2025

ELEV 17	TDZE 17
---------	---------



CATEGORY	A	B	C	D
LPV DA	298-1 281 (300-1)			
LNAV MDA	500-1	483 (500-1)	500-1½ 483 (500-1½)	500-1½ 483 (500-1½)
CIRCLING	500-1	483 (500-1)	540-1½ 523 (600-1½)	680-2 663 (700-2)