

WAAS CH <b>40209</b> <b>W34A</b>	APP CRS <b>342°</b>	Rwy Idg <b>3248</b> TDZE <b>17</b> Apt Elev <b>17</b>
--	------------------------	---

# RNAV (GPS) RWY 34

NAPAKIAK (WNA) (PANA)

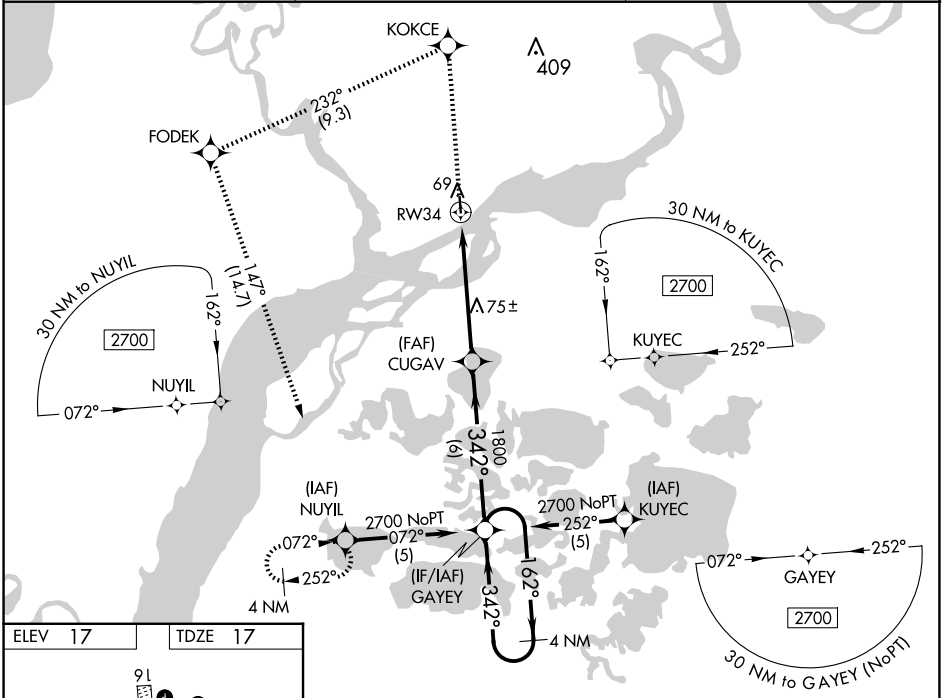
**V** DME/DME RNP-0.3 NA. When local altimeter setting not received, use Bethel altimeter setting. Procedure NA at night for Cat C and D aircraft. Rwy 34 helicopter visibility reduction 1 SM NA.

**A** NA

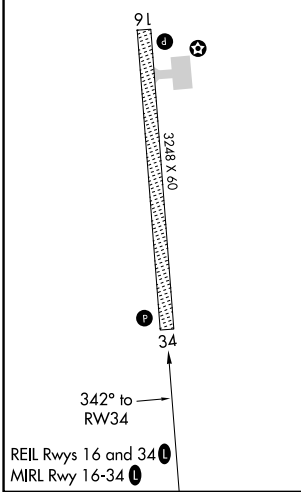
**W**

MISSED APPROACH: Climb to 2700 direct KOKCE and left turn on track 232° to FODEK on track 147° to NUYIL and hold.

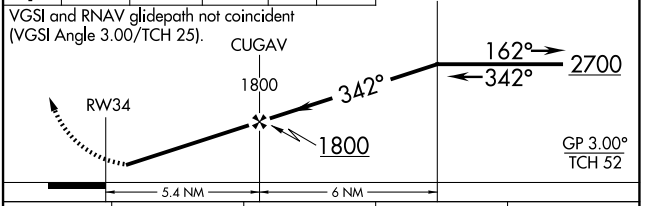
AWOS-3P <b>121.425</b>	ANCHORAGE CENTER <b>125.2 372.0</b>	CTAF <b>122.9</b>
---------------------------	--	----------------------



ELEV 17	TDZE 17
---------	---------



2700	KOKCE	tr 232°	FODEK	tr 147°	NUYIL	4 NM Holding Pattern
------	-------	---------	-------	---------	-------	----------------------



CATEGORY	A	B	C	D
LPV DA	298-1 281 (300-1)			
LNAV MDA	360-1 343 (400-1)		360-1¼ 343 (400-1¼)	
CIRCLING	500-1	483 (500-1)	540-1½ 523 (600-1½)	680-2 663 (700-2)

AK, 20 FEB 2025 to 17 APR 2025

AK, 20 FEB 2025 to 17 APR 2025