

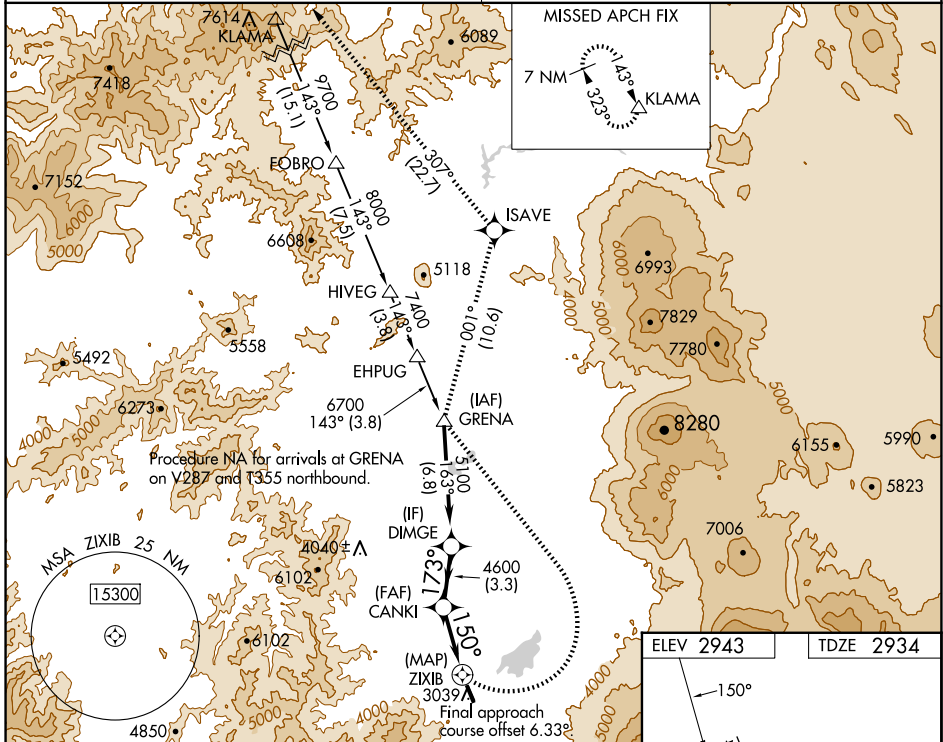
APP CRS	Rwy Idg	5000
150°	TDZE	2934
	Apt Elev	2943

RNAV (GPS) RWY 14

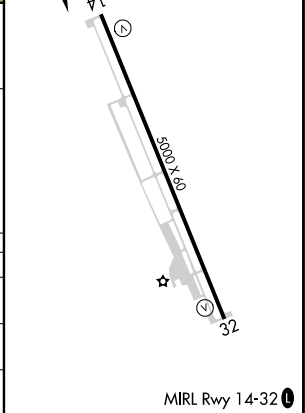
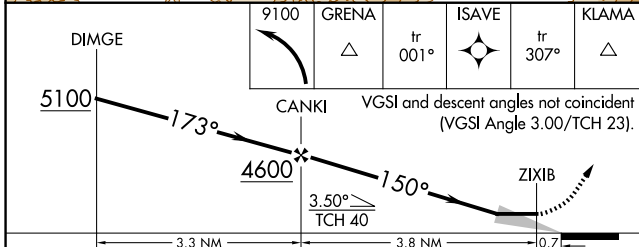
WEED (O46)

RNP APCH - GPS.	MISSED APPROACH: (Do not exceed 185K until GRENA) Climbing left turn to 9100 direct GRENA then on track 001° to ISAVE then on track 307° to KLAMA and hold.
<p>NA Circling NA southwest of Rwy 14-32.</p> <p>NA Use Montague altimeter setting.</p>	*Missed approach requires minimum climb of 325 feet per NM to 4000.

SEATTLE CENTER 124.85 306.3	UNICOM 122.7 (CTAF)
---------------------------------------	-------------------------------



ELEV 2943	TDZE 2934
-----------	-----------



CATEGORY	A	B	C	D
LNAV MDA*	3440-1	506 (500-1)	3580-1 $\frac{7}{8}$ 646 (700-1 $\frac{7}{8}$)	3700-2 $\frac{1}{2}$ 766 (800-2 $\frac{1}{2}$)
LNAV MDA	3440-1 506 (500-1)	3480-1 546 (600-1)	3780-2 $\frac{1}{2}$ 846 (900-2 $\frac{1}{2}$)	3820-2 $\frac{1}{2}$ 886 (900-2 $\frac{1}{2}$)
C CIRCLING	3680-1 737 (800-1)	3840-1 $\frac{1}{4}$ 897 (900-1 $\frac{1}{4}$)	4220-3 1277 (1300-3)	4440-3 1497 (1500-3)

SW-2, 20 MAR 2025 to 17 APR 2025

SW-2, 20 MAR 2025 to 17 APR 2025