

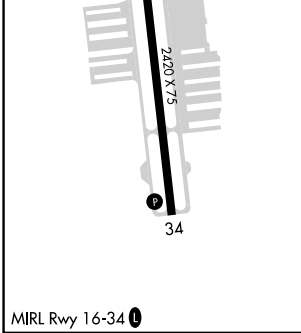
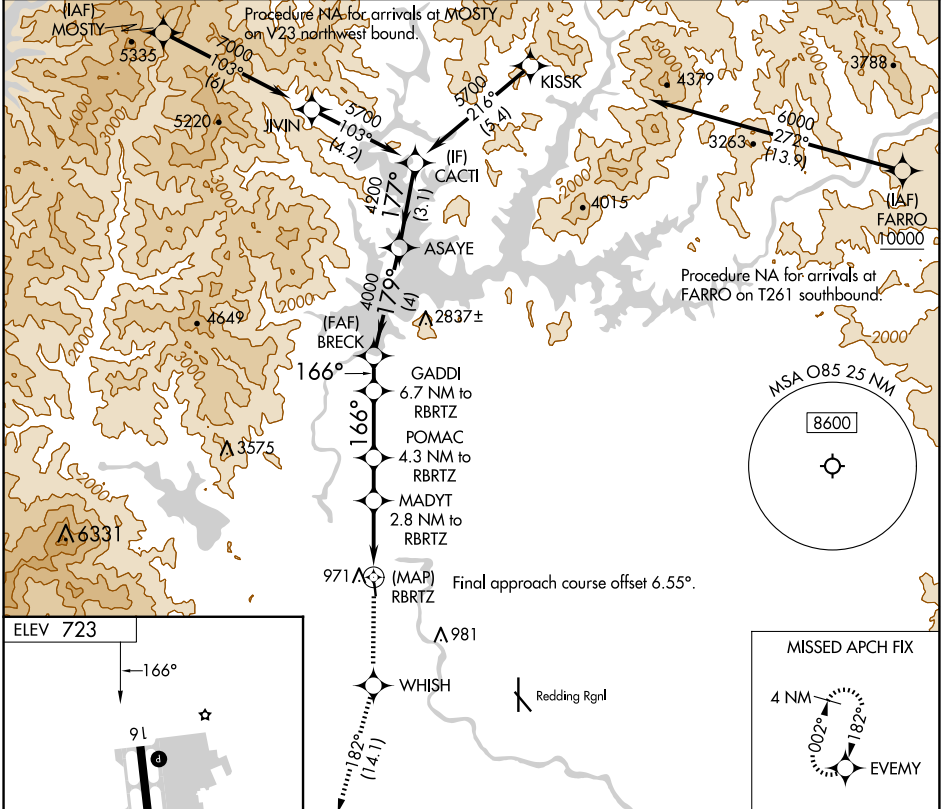
APP CRS	Rwy Idg	N/A
166°	TDZE	N/A
	Apt Elev	723

RNAV (GPS)-A

BENTON FLD (O85)

RNP APCH - GPS.	Procedure NA at night. Rwy 16, 34 helicopter visibility reduction below 1 SM NA. When local altimeter setting not received, use Redding Rgnl altimeter setting and increase all MDAs 60 feet.	MISSED APPROACH: Climb to 4000 direct WHISH and on track 182° to EVMY and hold.
-----------------	---	---

AWOS-2 118.675	OAKLAND CENTER 132.2 350.3	UNICOM 122.8 (CTAF) 0
--------------------------	--------------------------------------	---------------------------------



4000	WHISH	tr 182°	EVMY	VGSI and descent angles not coincident (VGSI Angle 3.50/TCH 24).	ASAYE	CACTI
				GADDI 6.7 NM to RBRTZ	BRECK	
				POMAC 4.3 NM to RBRTZ		
				MADYT 2.8 NM to RBRTZ		
				RBRTZ		
				1960	2560	3500
				3.70°	179°	177°
				TCH 60	4000	4200
				2.8 NM	1.5 NM	2.4 NM
				1.3 NM	4 NM	3.1 NM
CATEGORY	A	B	C	D	NA	
CIRCLING	1340-1 617 (700-1)	1600-1¼ 877 (900-1¼)			NA	

SW-2, 20 MAR 2025 to 17 APR 2025

SW-2, 20 MAR 2025 to 17 APR 2025