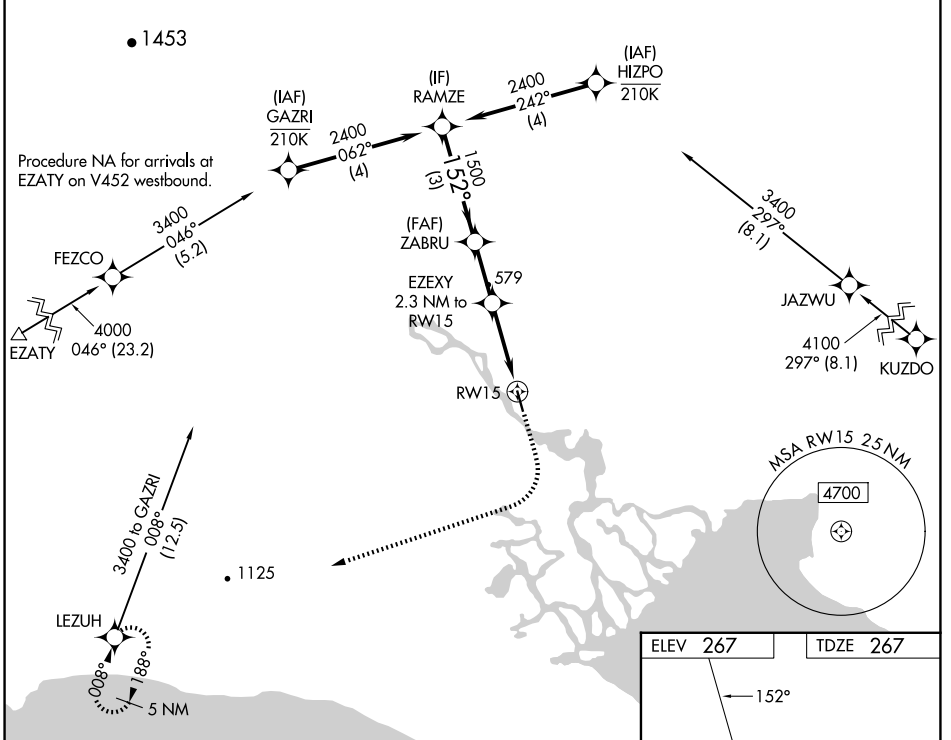


WAAS CH <b>82331</b> <b>W15A</b>	APP CRS <b>152°</b>	Rwy Idg TDZE Apt Elev	<b>3000</b> <b>267</b> <b>267</b>
--	------------------------	-----------------------------	---

# RNAV (GPS) RWY 15

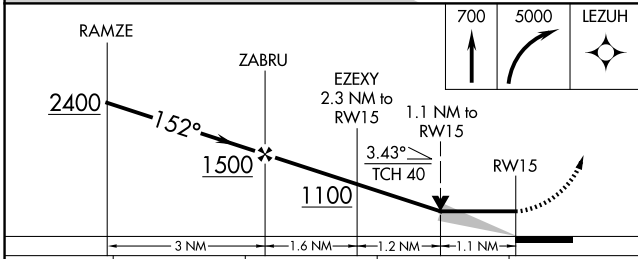
WHITE MOUNTAIN (WMO) (P A W M)

RNP APCH. Circling NA northeast of Rwy 15-33.		MISSED APPROACH: Climb to 700 then climbing right turn to 5000 direct LEZUH and hold, continue climb-in-hold to 5000.	
AWOS-3P <b>121.45</b>	ANCHORAGE CENTER <b>133.3 290.4</b>	NOME RADIO <b>122.05</b>	CTAF <b>122.9</b>

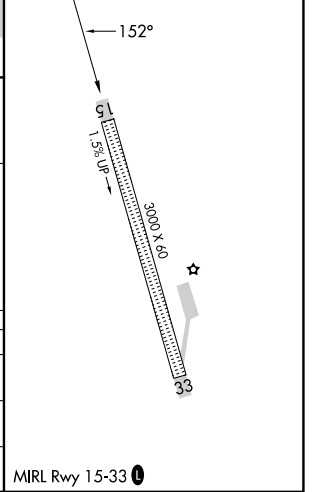


AK, 20 FEB 2025 to 17 APR 2025

AK, 20 FEB 2025 to 17 APR 2025



ELEV 267	TDZE 267
----------	----------



CATEGORY	A	B	C	D
LP MDA	660-1	393 (400-1)	660-1½ 393 (400-1½)	NA
LNAV MDA	800-1	533 (600-1)	800-1½ 533 (600-1½)	NA
CIRCLING	800-1	533 (600-1)	1080-2½ 813 (900-2½)	NA