

WAAS CH <b>99500</b> <b>W12A</b>	APP CRS <b>120°</b>	Rwy Idg <b>3482</b> TDZE <b>5</b> Apt Elev <b>5</b>
--	------------------------	---

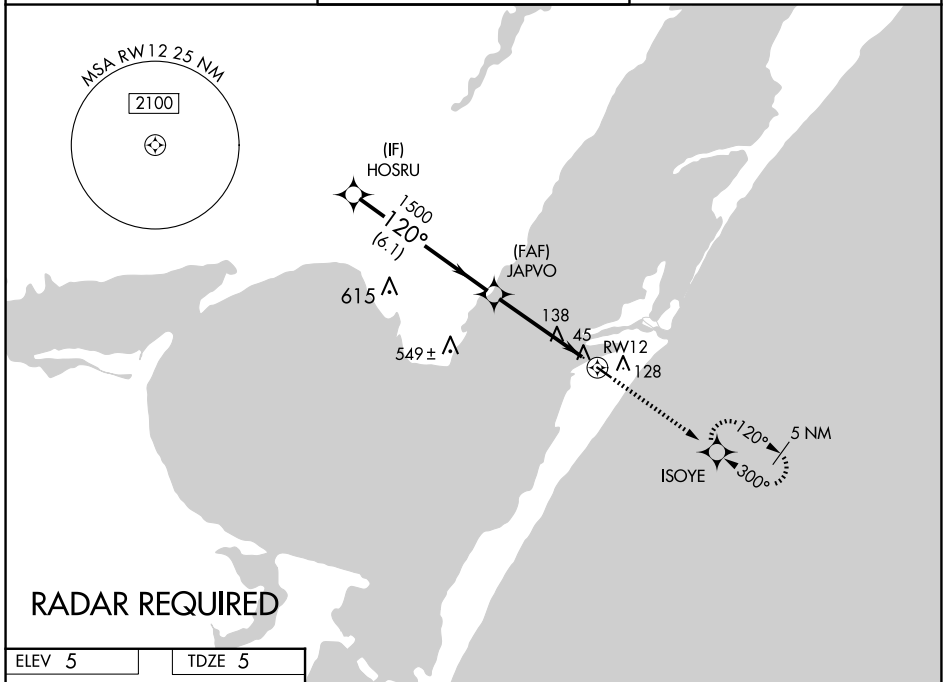
# RNAV (GPS) RWY 12

MUSTANG BEACH (R.A.S)

**⚠** DME/DME RNP-0.3 NA. For uncompensated Baro-VNAV systems, LNAV/VNAV NA below -15°C (5°F) or above 44°C (111°F). If local altimeter setting not received, use Corpus Christi Intl altimeter setting and increase all DAs/MDAs 60 feet. Baro-VNAV and VDP NA when using Corpus Christi Intl altimeter setting.

**MISSED APPROACH:** Climb to 2000 direct ISOYE and hold.

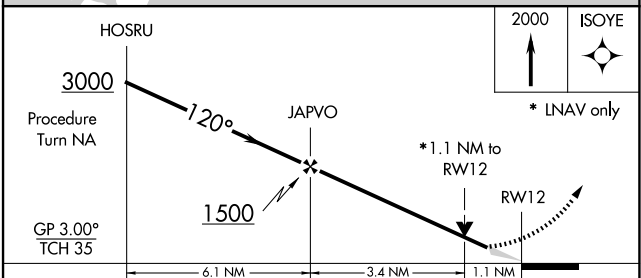
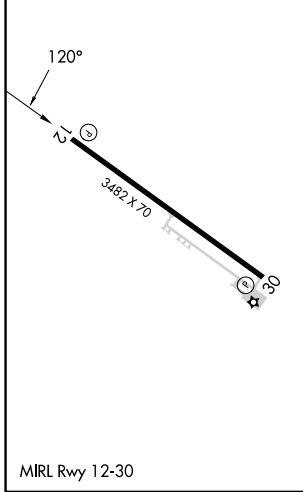
AWOS-3 <b>118.425</b>	CORPUS APP CON <b>125.4 307.9</b>	CTAF <b>122.9</b>
--------------------------	--------------------------------------	----------------------



SC-3, 20 MAR 2025 to 17 APR 2025

SC-3, 20 MAR 2025 to 17 APR 2025

ELEV 5	TDZE 5
--------	--------



CATEGORY	A	B	C	D
LPV DA	276-1	271 (300-1)		NA
LNAV/VNAV DA	435-1½	430 (500-1½)		NA
LNAV MDA	400-1	395 (400-1)		NA
CIRCLING	500-1	495 (500-1)		NA