

WAAS CH 63000 W30A	APP CRS 300°	Rwy Idg 3482 TDZE 5 Apt Elev 5
--	------------------------	---

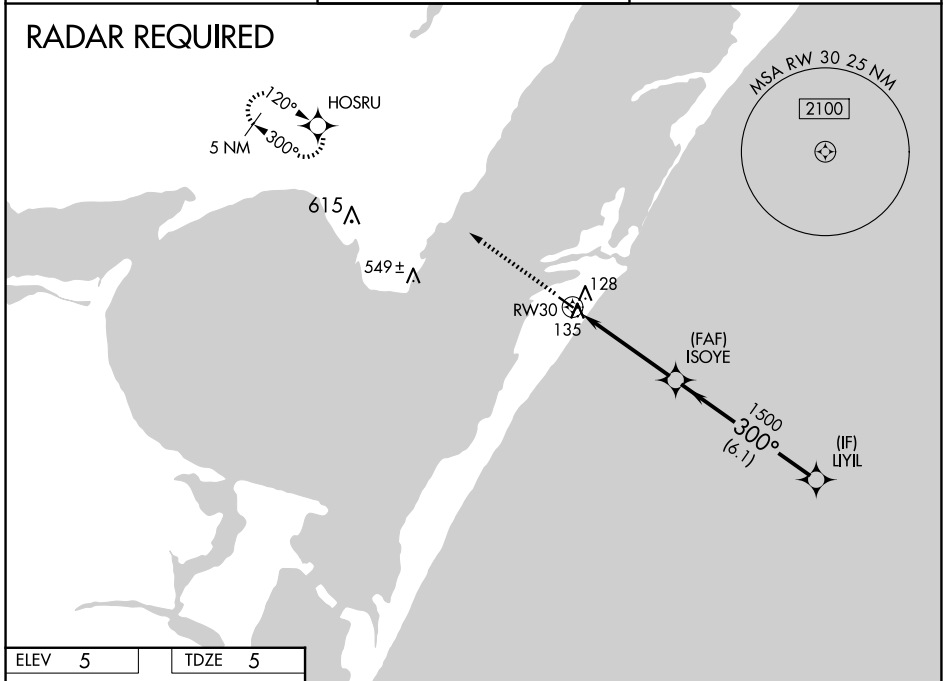
RNAV (GPS) RWY 30

MUSTANG BEACH (R.A.S)

⚠ DME/DME RNP-0.3 NA. For uncompensated Baro-VNAV systems, LNAV/VNAV NA below -1.5°C (5°F) or above 44°C (111°F). If local altimeter setting not received, use Corpus Christi Intl altimeter setting and increase all DAs/MDAs 60 feet. Baro-VNAV and VDP NA when using Corpus Christi Intl altimeter setting.

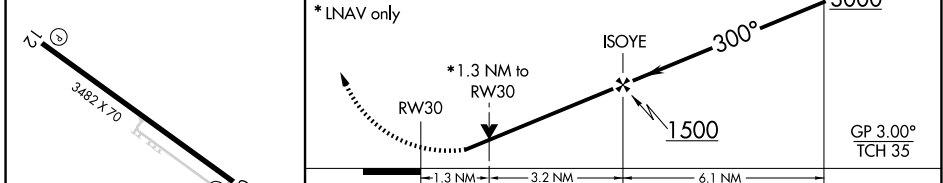
MISSED APPROACH: Climb to 2000 direct HOSRU and hold.

AWOS-3 118.425	CORPUS APP CON 125.4 307.9	CTAF 122.9
--------------------------	--------------------------------------	----------------------



ELEV 5	TDZE 5
--------	--------

2000 HOSRU Procedure Turn NA
 ↑ ✦ VGSi and RNAV glidepath not coincident (VGSi Angle 3.20/TCH 22).
 * LNAV only



CATEGORY	A	B	C	D
LPV DA	362-1¼	357 (400-1¼)		NA
LNAV/VNAV DA	435-1½	430 (500-1½)		NA
LNAV MDA	440-1	435 (500-1)		NA
CIRCLING	500-1	495 (500-1)		NA

SC-3, 20 MAR 2025 to 17 APR 2025

SC-3, 20 MAR 2025 to 17 APR 2025