

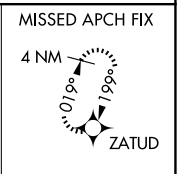
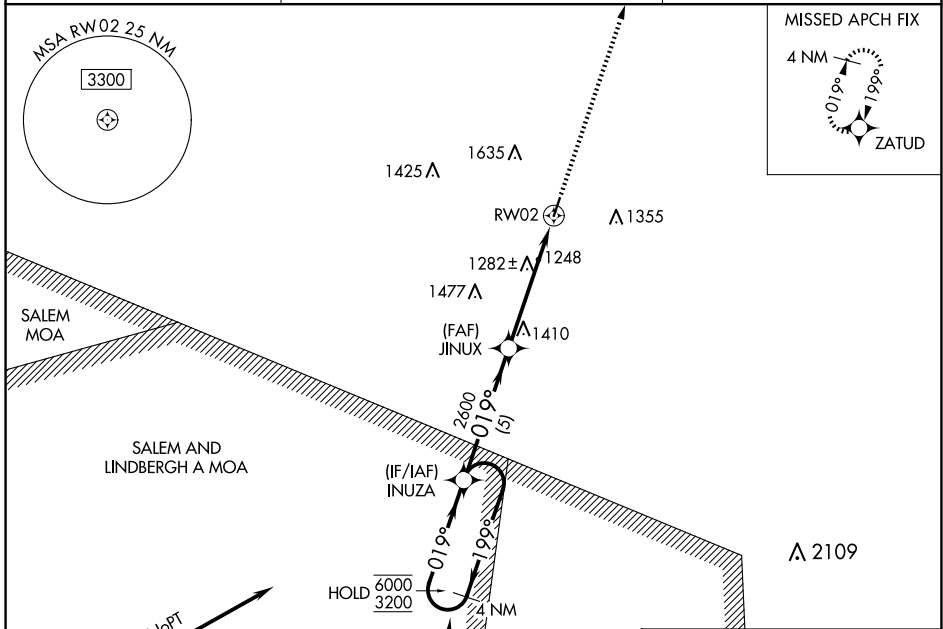
WAAS CH 93624 W02A	APP CRS 019°	Rwy Idg TDZE Apt Elev	4000 959 959
--	------------------------	-----------------------------	---

RNAV (GPS) RWY 2

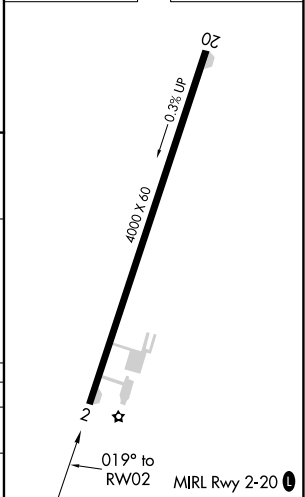
WASHINGTON COUNTY (8WC)

RNP APCH-GPS.		MISSED APPROACH: Climb to 3100 direct ZATUD and hold.
▼ ▲NA	Rwy 2 helicopter visibility reduction below 3/4 SM NA. Use Farmington altimeter setting.	

FAM AWOS-3PT 119.275	KANSAS CITY CENTER 128.35 284.675	UNICOM 123.0 (CTAF) 0
--------------------------------	---	---------------------------------



ELEV 959	TDZE 959
----------	----------



4 NM Holding Pattern	INUZA	Visual Segment - Obstacles.	3100	ZATUD
6000 ← 199°			↑	✦
3200 → 019°				

CATEGORY	A	B	C	D
LP MDA	1680-1	721 (800-1)		NA
LNAV MDA	1760-1 801 (900-1)	1760-1 1/4 801 (900-1 1/4)		NA

NC-3, 20 MAR 2025 to 17 APR 2025

NC-3, 20 MAR 2025 to 17 APR 2025