

APP CRS	Rwy Idg	3200
003°	TDZE	80
	Apt Elev	80

RNAV (GPS) RWY 36

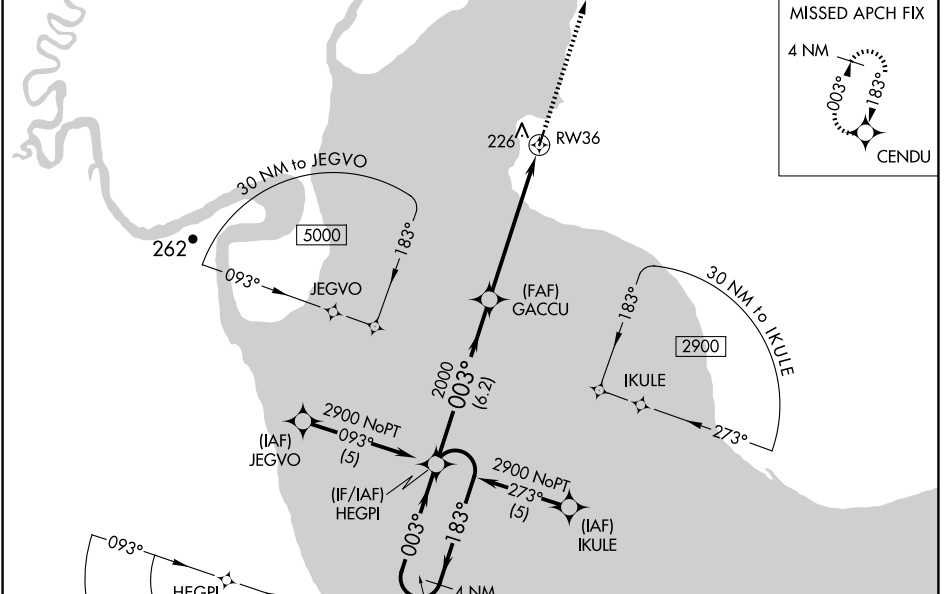
CLARKS POINT (CLP) (PF/CL)

RNP APCH-GPS.

⚠ Rwy 36 helicopter visibility reduction below 1 SM NA. Rwy 36 Straight-in and Circling minimums NA at night. When local altimeter setting not received, use Dillingham altimeter setting and increase all MDAs 40 feet and LNAV visibility Cat C/D ½ SM.

MISSED APPROACH: Climb to 2900 direct CENDU and hold.

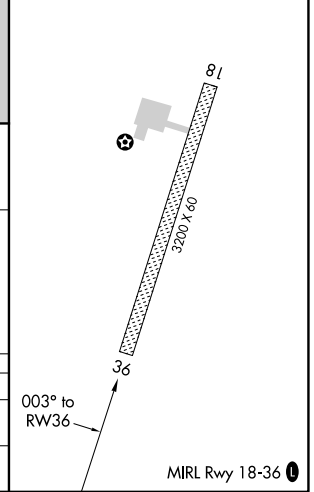
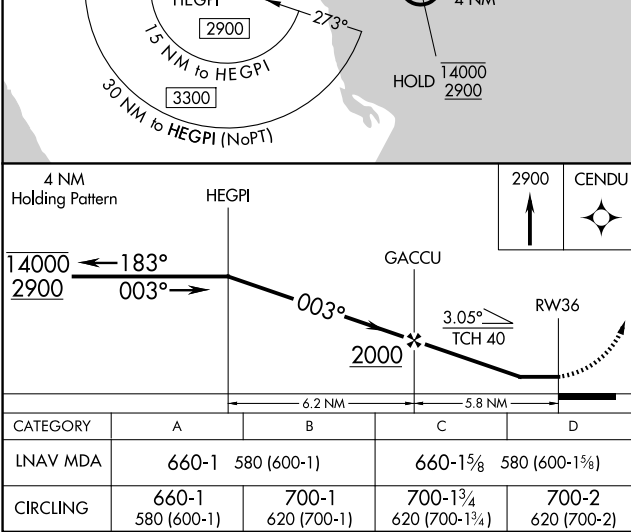
AWOS-3P 121.45	ANCHORAGE CENTER 132.75 282.35	CTAF 122.9
--------------------------	--	----------------------



AK, 20 FEB 2025 to 17 APR 2025

AK, 20 FEB 2025 to 17 APR 2025

ELEV 80	TDZE 80
---------	---------



CATEGORY	A	B	C	D
LNAV MDA	660-1	580 (600-1)	660-1½	580 (600-1½)
CIRCLING	660-1 580 (600-1)	700-1 620 (700-1)	700-1¾ 620 (700-1¾)	700-2 620 (700-2)